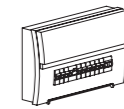


# User Manual

## Artco Series

### WARNING ⚡

1. Switch off the power before starting installation or maintenance.
2. Turn on only after the installation and examination of the circuit are complete.
3. The light must be installed and maintained by professional electrician.

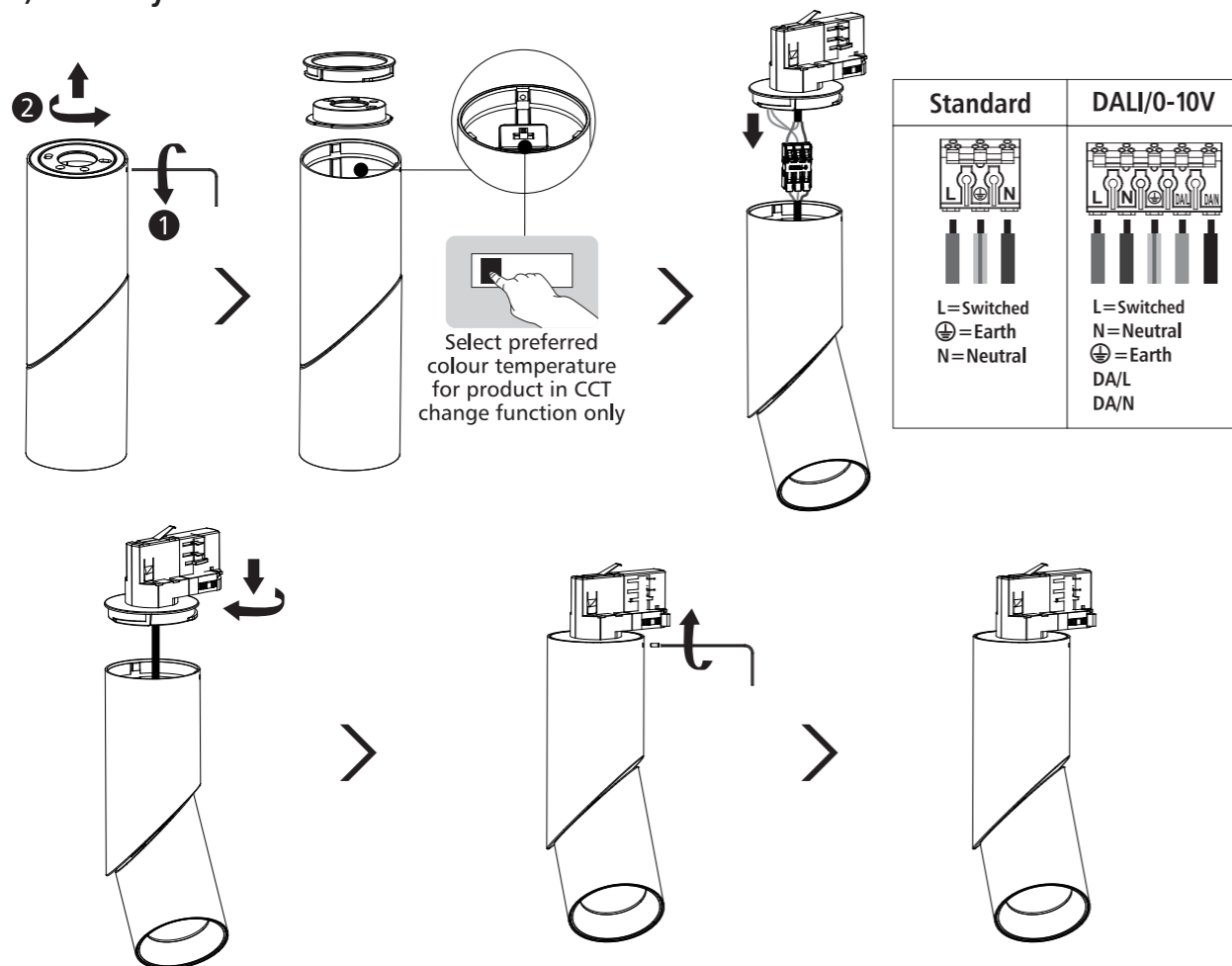


Turn Off  
Power Supply

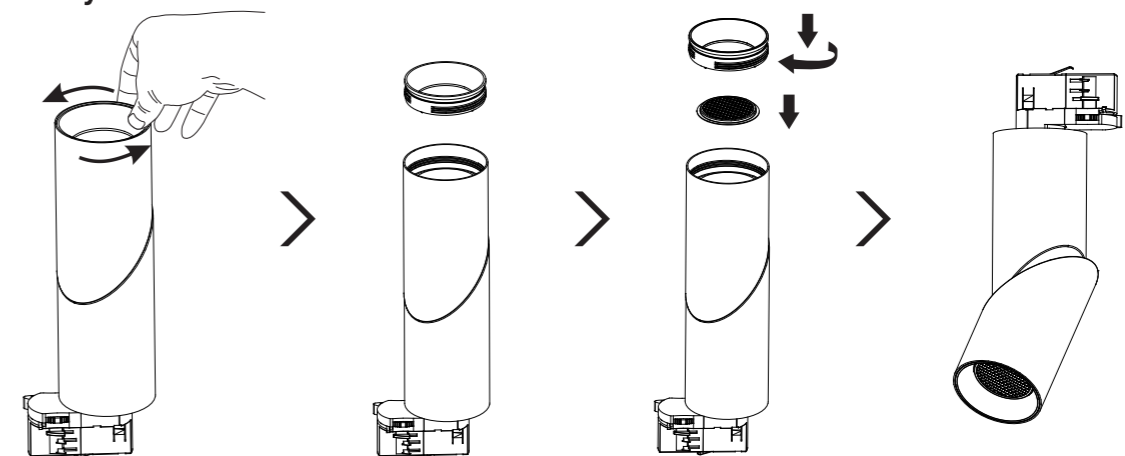
Ensure that the power supply is turned off prior to beginning any installation. Review the instructions and verify that you possess all necessary tools and accessories to complete the installation accurately.

### Lamp DIY Instruction

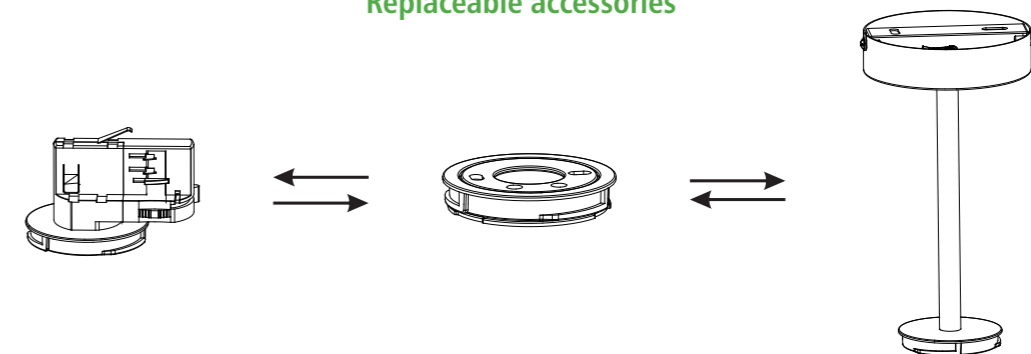
#### (Dis)assembly reference



#### Assemble honeycomb

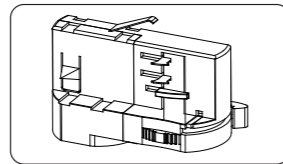


#### Replaceable accessories

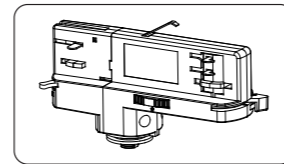


## Track Installation

Select corresponding adapter before installation



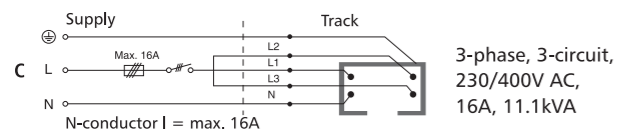
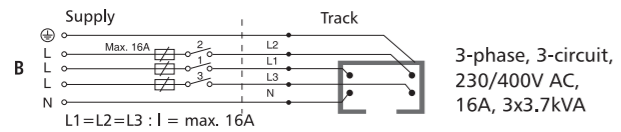
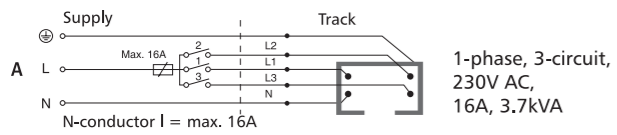
4-wires, 3-circuit



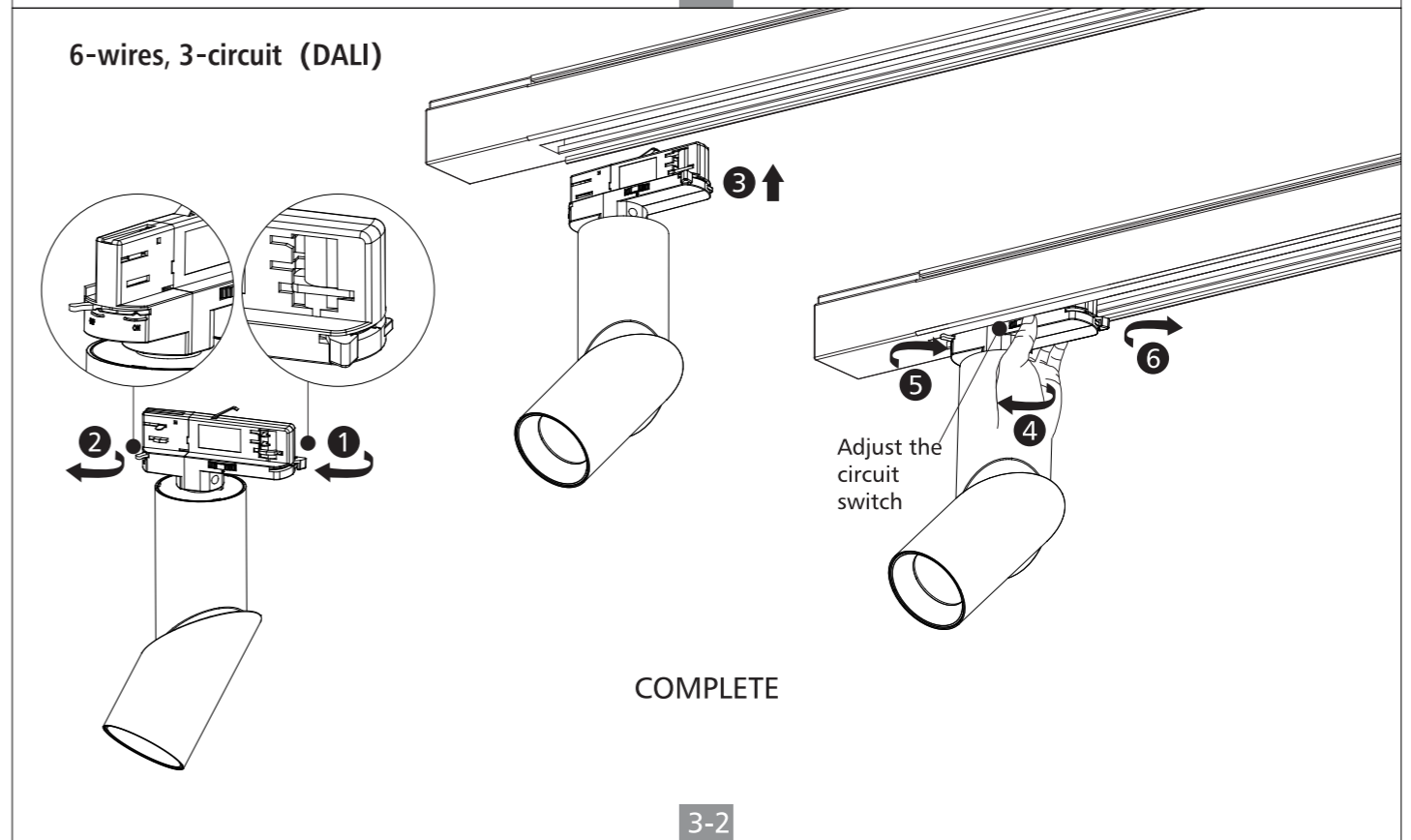
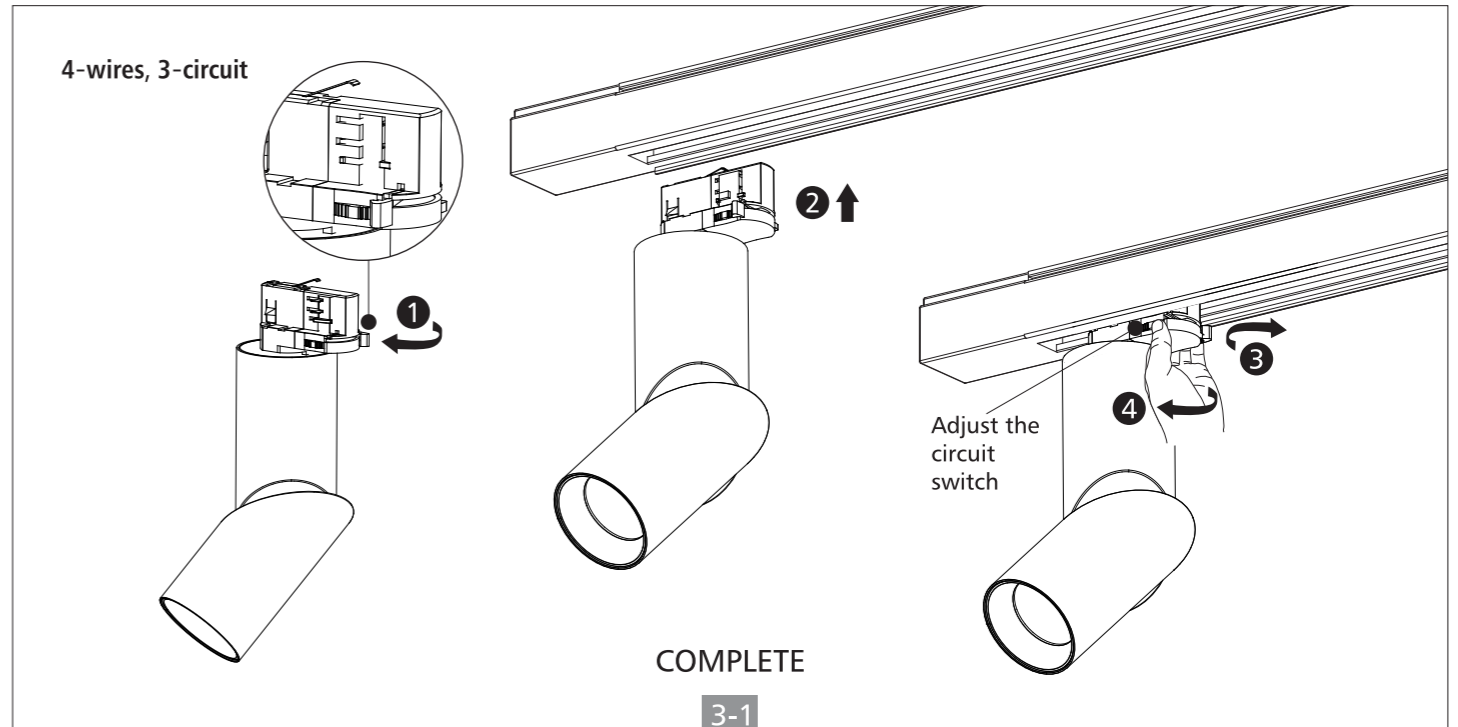
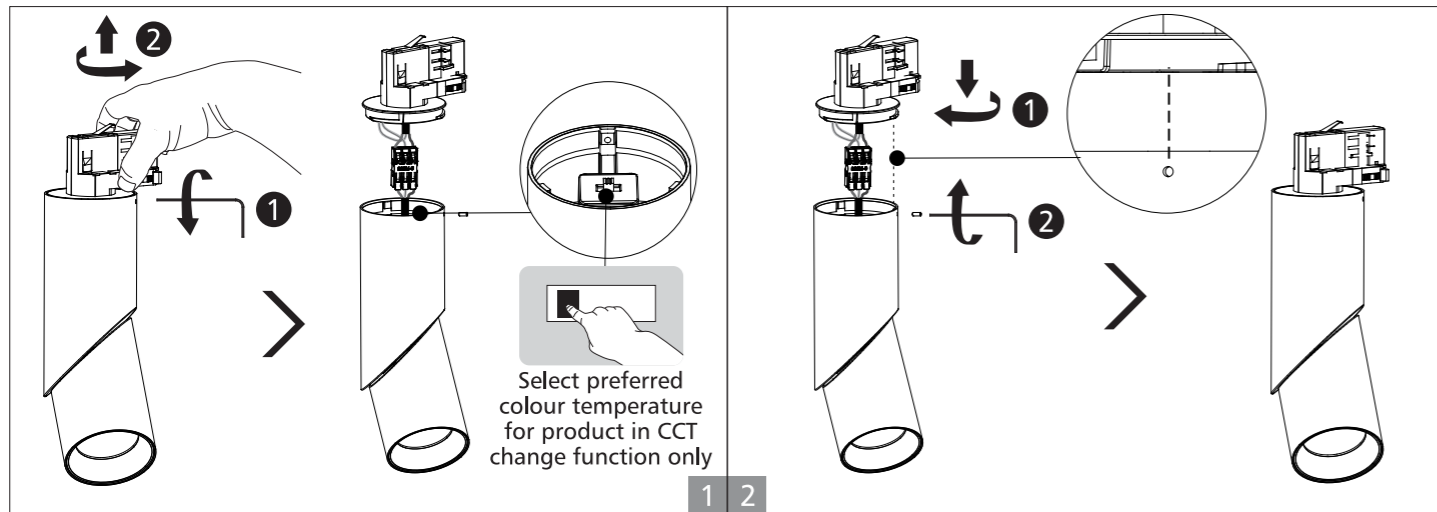
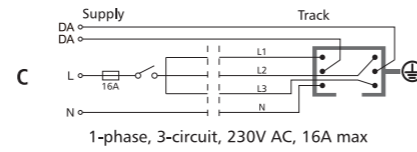
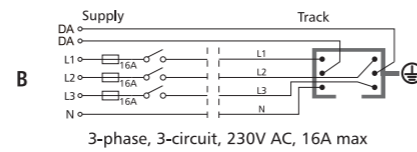
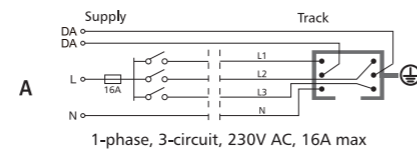
6-wires, 3-circuit

## Wiring Diagram

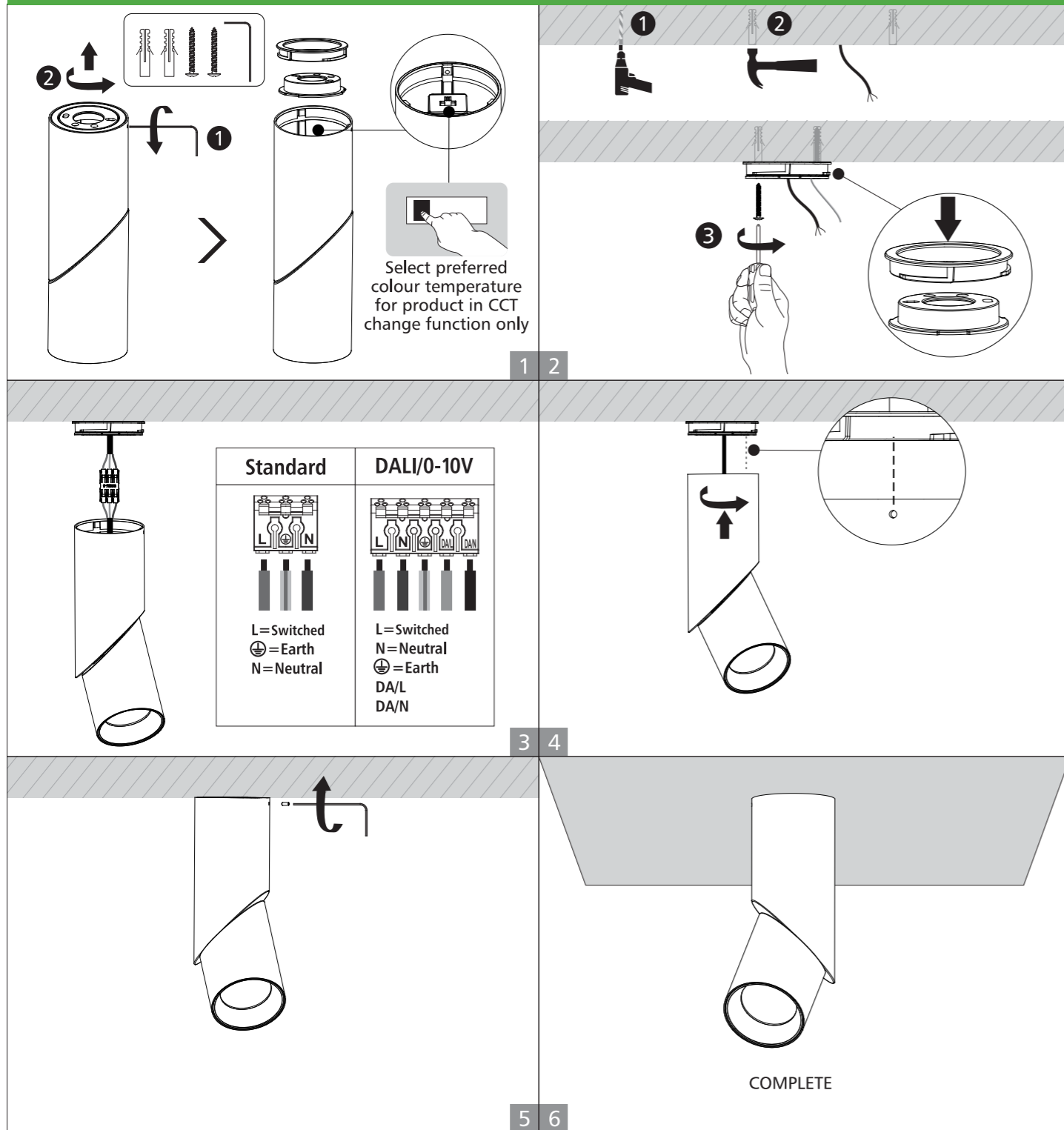
### 4-wires, 3-circuit



### 6-wires, 3-circuit (DALI)



## Surface Mount Installation



## Pendant Rod Installation

Code	A-01	A-02	A-03	A-04	A-05
ACC	x1	x2	x2	x1	x1

