

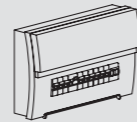
# User Manual

## WL50 Outdoor LED Wall Mounted Light

### WARNING



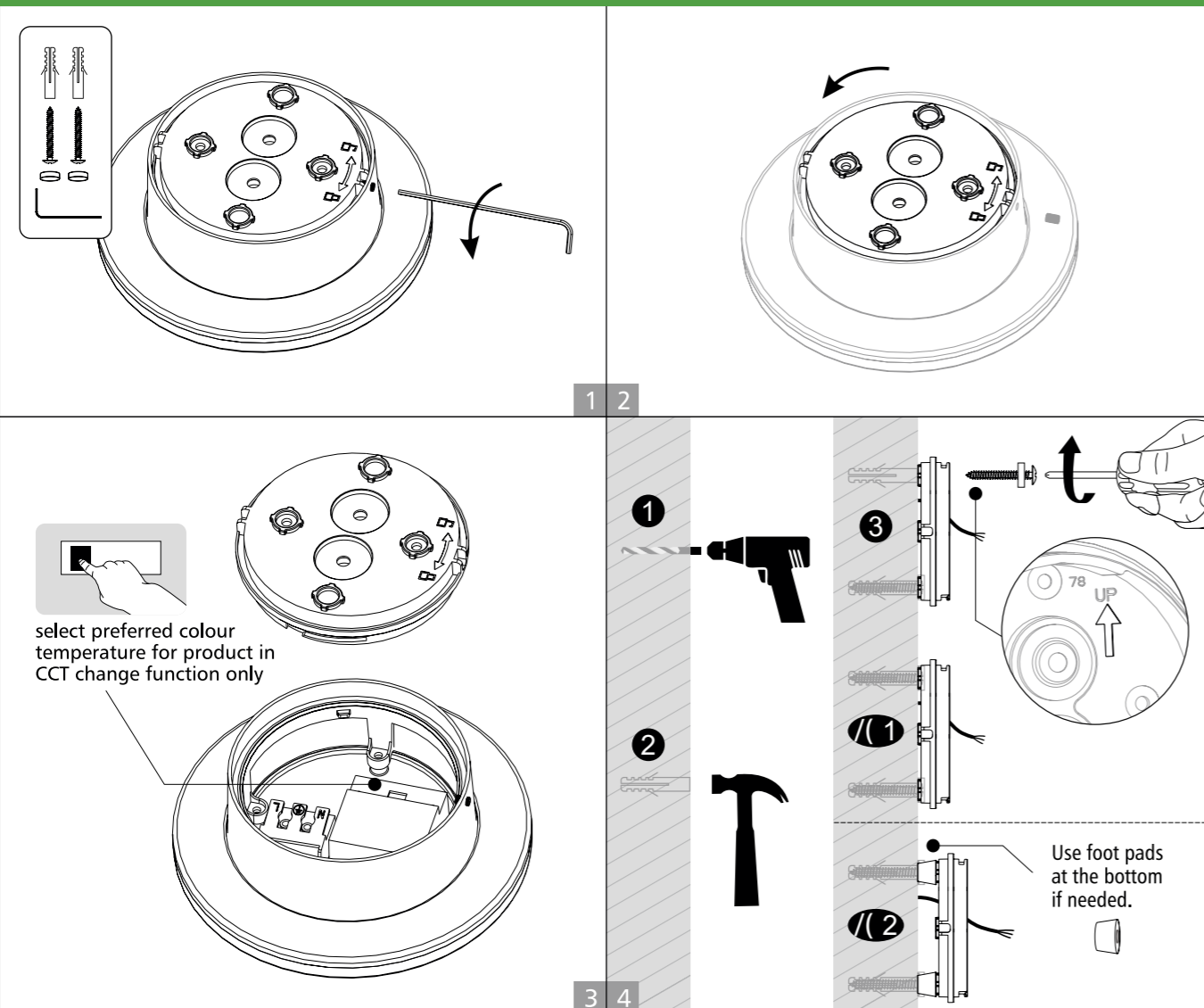
1. Switch off power supply before installation / maintenance.
2. Switch on after completing installation and examination of the circuit.
3. The Light must be installed and maintained by professional electrician.



Turn Off  
Power Supply

Before beginning any installation, turn off the power supply. To finish the installation correctly, read the instructions and make sure you have all the necessary tools and accessories.

### Installation Instruction



### Important Safety Instructions

It is crucial to adhere to fundamental safety measures during installation, which encompass the subsequent guidelines.

1. Read all instructions.
2. Licensed electrician for installation only
3. Always ensure the power is OFF and the fitting has cooled down before performing any maintenance, cleaning, changing the globe or adjustment to the fitting.
4. Do not install any luminaire near the heat source.
5. Do not exceed the nominal supply voltage or amperage ratings.
6. To avoid injury or damage to the fitting, please ensure that power leads and screws are secure maintenance, cleaning, changing the globe or adjustment to the fitting before connecting the power.

