

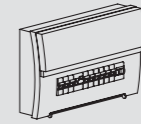
# User Manual

## ML330 Series LED Mirror Light

### WARNING



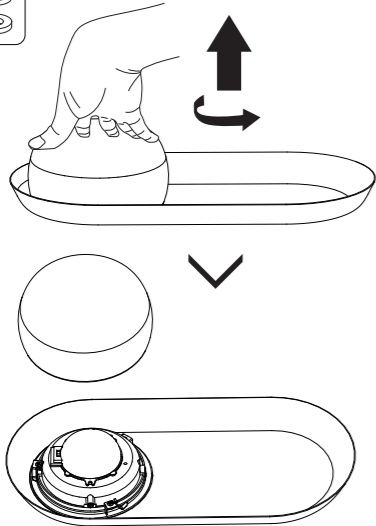
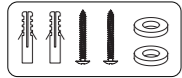
1. Switch off power supply before installation / maintenance.
2. Switch on after completing installation and examination of the circuit.
3. The light must be installed and maintained by professional electrician.



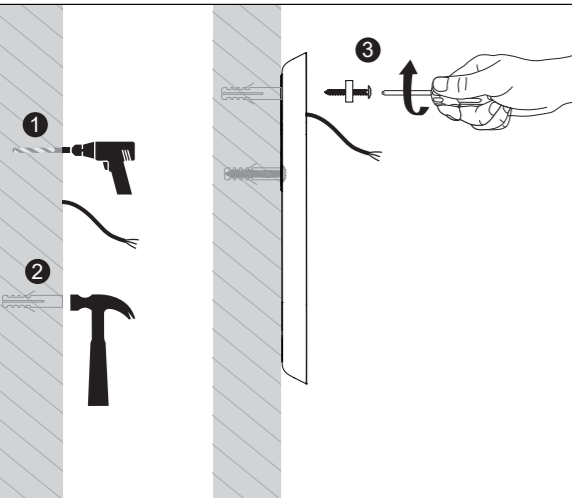
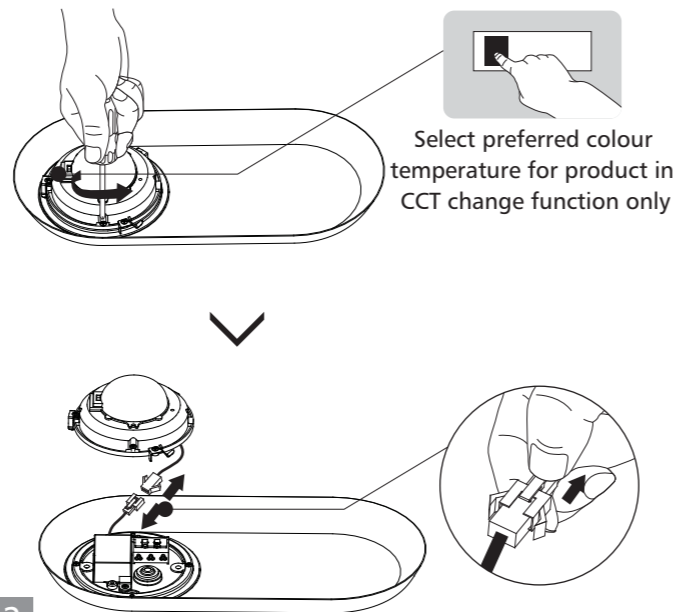
**Turn Off  
Power Supply**

Before beginning any installation, turn off the power supply. To finish the installation correctly, read the instructions and make sure you have all the necessary tools and accessories.

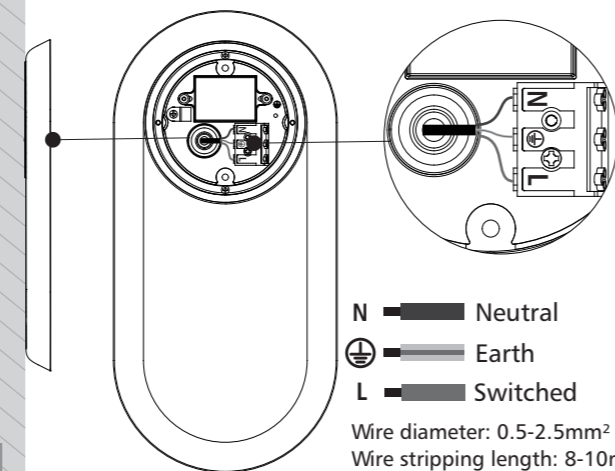
### Wall mount installation



1 2

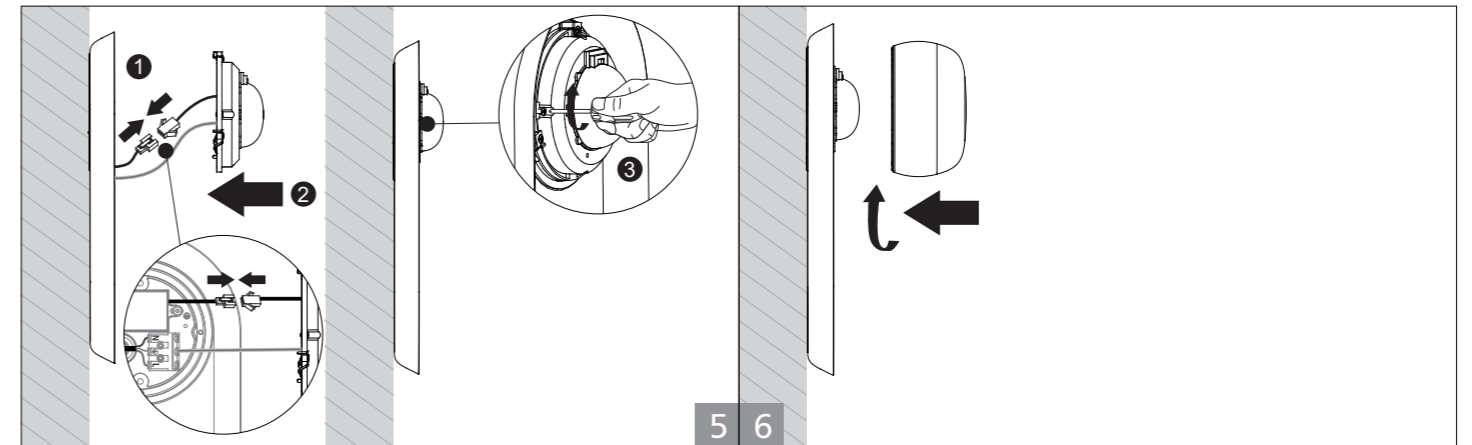


3 4

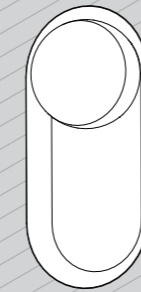


N — Neutral  
 Earth — Earth  
 L — Switched

Wire diameter: 0.5-2.5mm<sup>2</sup>  
 Wire stripping length: 8-10mm



5 6



COMPLETE

The replacement of the light source in this luminaire should be carried out exclusively by the manufacturer, their authorized service agent, or a similarly qualified professional.



Caution, risk of Electric shock.

7