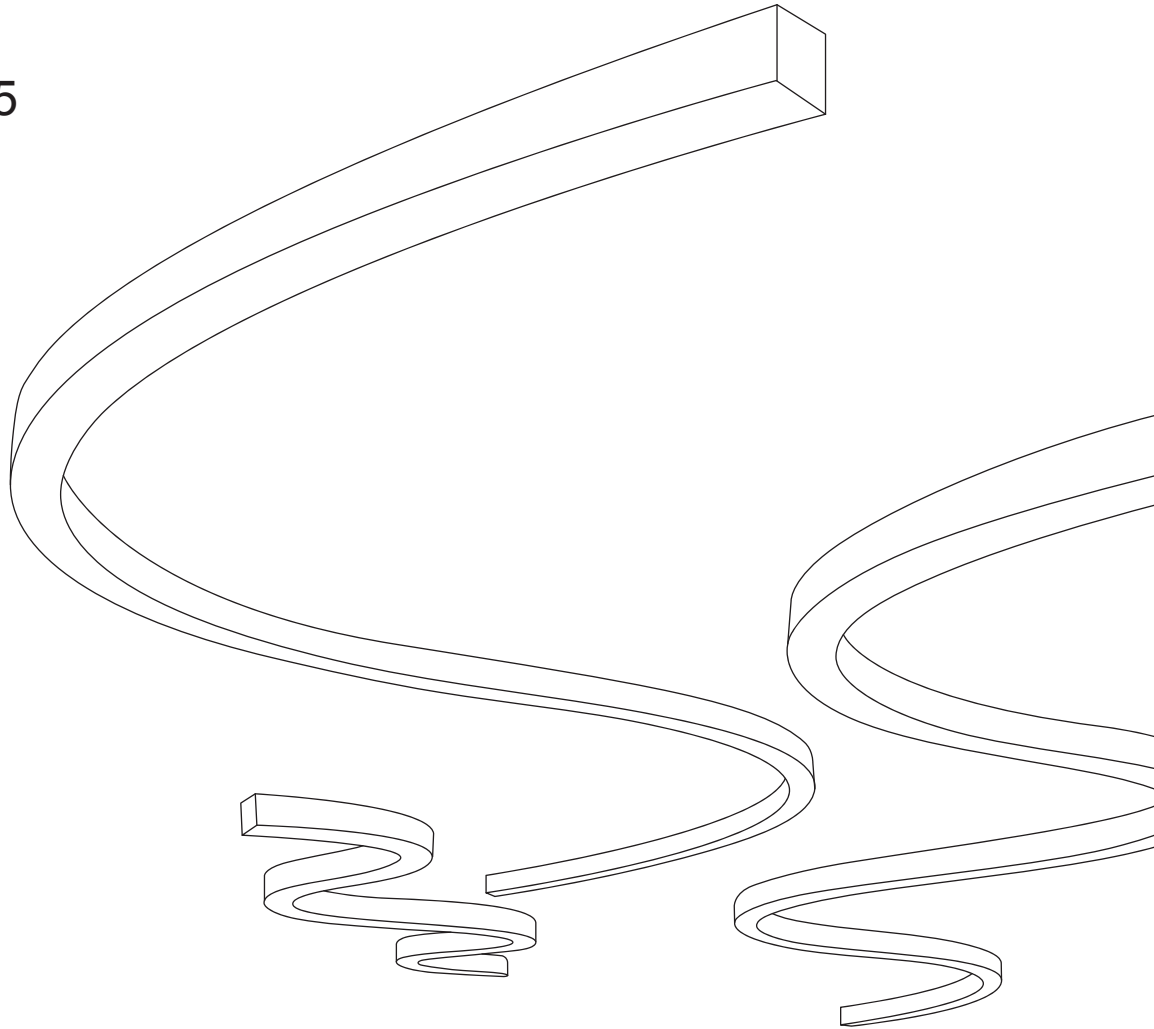


USER MANUAL

- Customized Luminaire

Chain GAS3535



Please read the manual carefully before installation and application, and use the product in the correct way.
Instructions on accessories are included in the manual.
Please properly maintain the manual after reading and understanding it for convenient reference by all users
of the product in the future.

Basic Modules



Φ800mm, Curve 90° (Lighting Downward),
45° Rigid Modular



Φ800mm, Curve 45° (Lighting Downward),
45° Rigid Modular



Φ1500mm, Curve 90° (Lighting Downward),
45° Rigid Modular



Φ1500mm, Curve 45° (Lighting Downward),
45° Rigid Modular



Φ1500mm, Curve 90° (Lighting Inward),
Flexible Strip



Φ1500mm, Curve 90° (Lighting Outward),
Flexible Strip



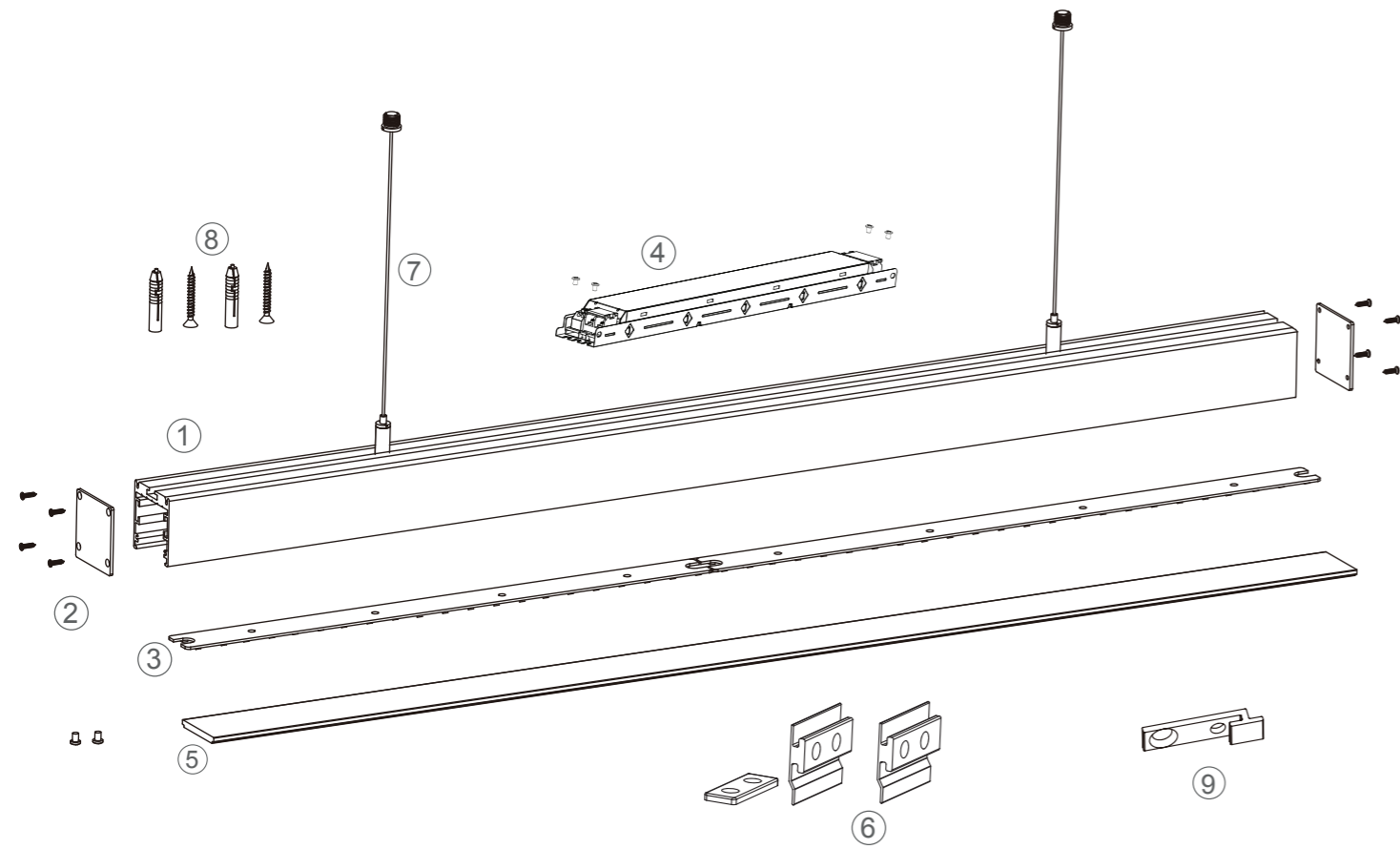
Φ3000mm, Curve 45° (Lighting Downward),
22.5° Rigid Modular



Straight Line (2500mm),
Rigid Module (499mm)



Product Structure AS3535 straight line



Main components

- ① Profile ② End cap ③ Rigid module
- ④ Power supply ⑤ Diffuser

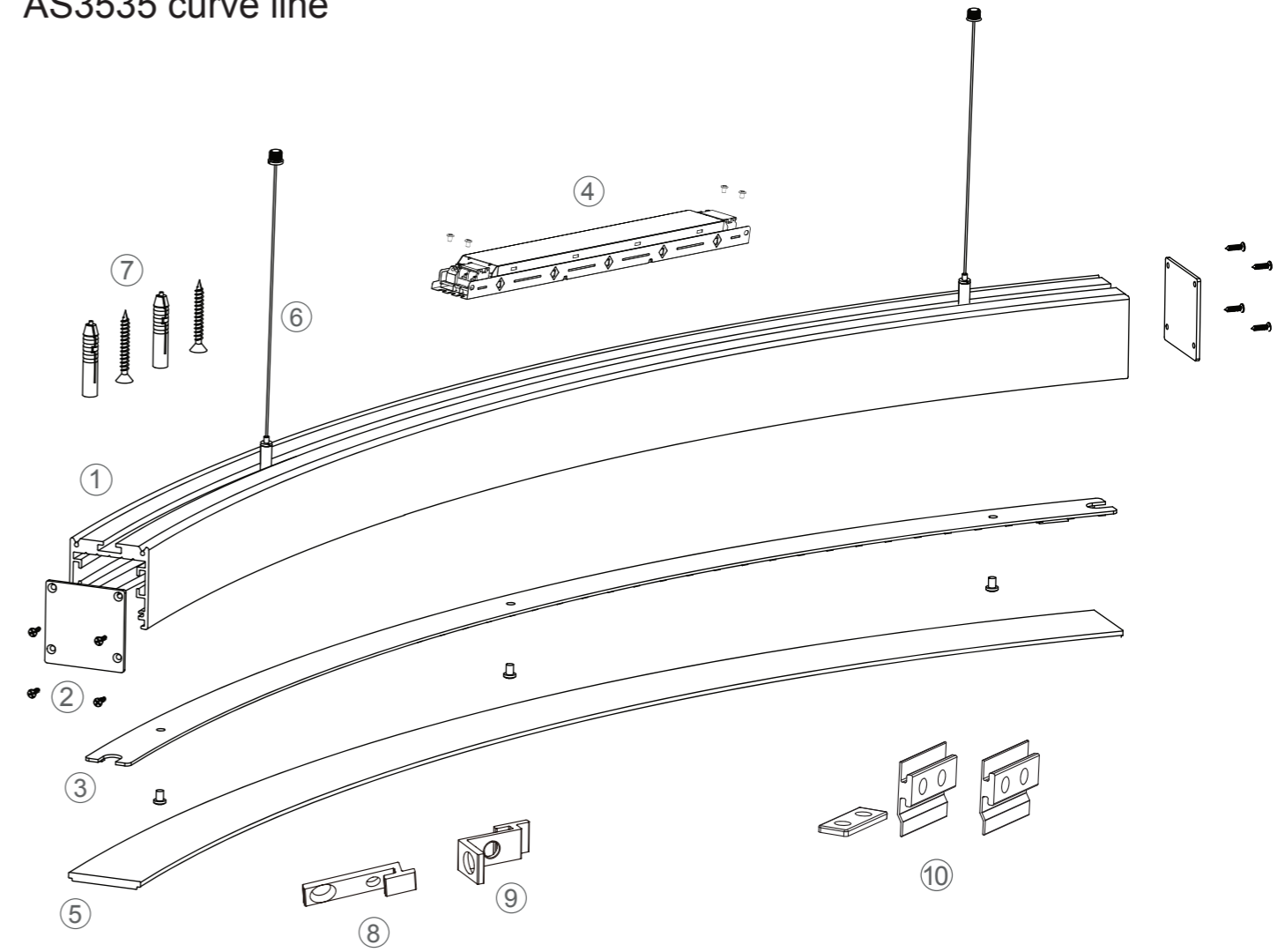
Connectors

- ⑥ EX-26

Installation accessories

- ⑦ Pendant cable
- ⑧ Surface mounted screws
- ⑨ Surface mounted accessories (lighting downward))

AS3535 curve line



Main components

- ① Profile ② End cap ③ Rigid module
- ④ Power supply ⑤ Diffuser

Connectors

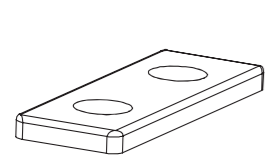
- ⑩ EX-26

Installation accessories

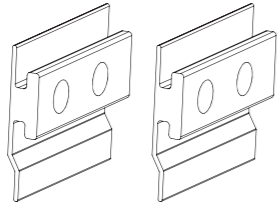
- ⑥ Pendant cable
- ⑦ Surface mounted screws
- ⑧ Surface mounted accessories (lighting downward)
- ⑨ Surface mounted accessories (Lighting Inward/ Lighting Outward)

Profiles interconnection

Accessory model

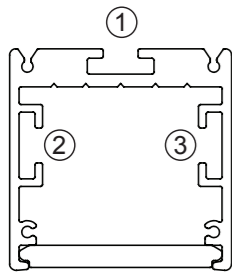


Connectors(EX-26)



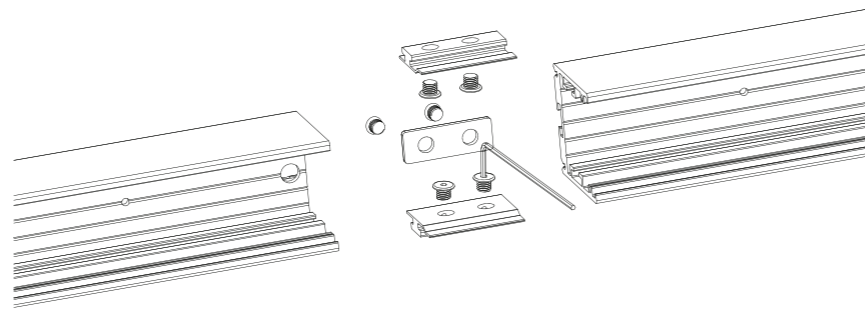
Flat-headed screw

Interconnecting position



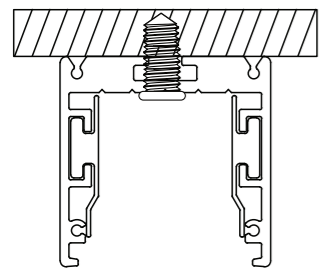
AS3535

① Back ②③ Side

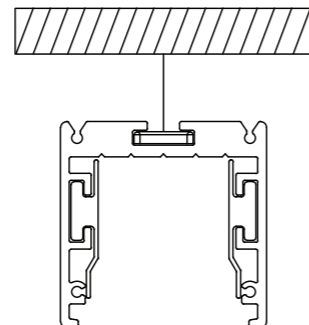


Installation

Surface mounted (②③ position needs connect)

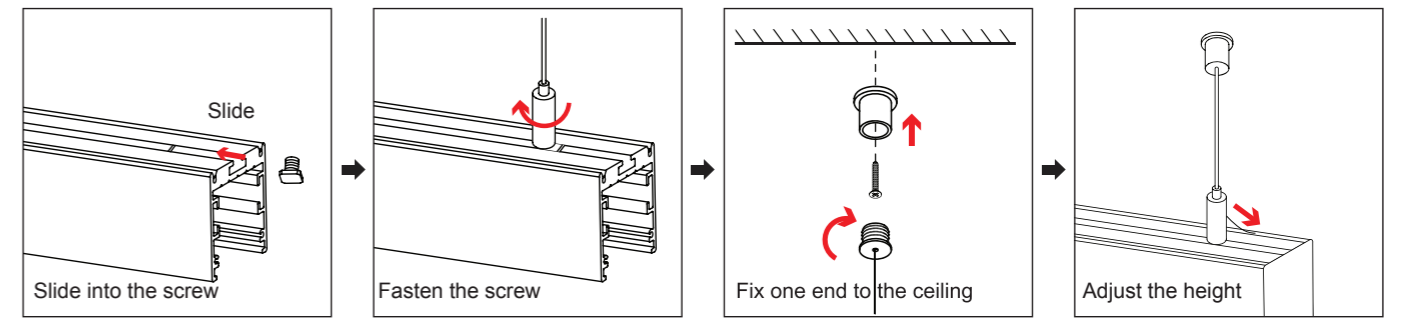


Pendant (①②③ position needs connect)



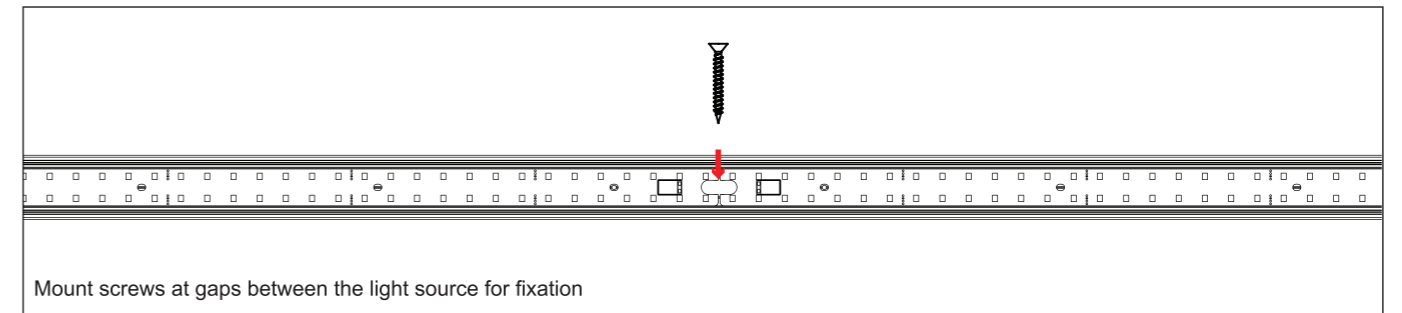
Installation of profile

Pendant



Surface mounted

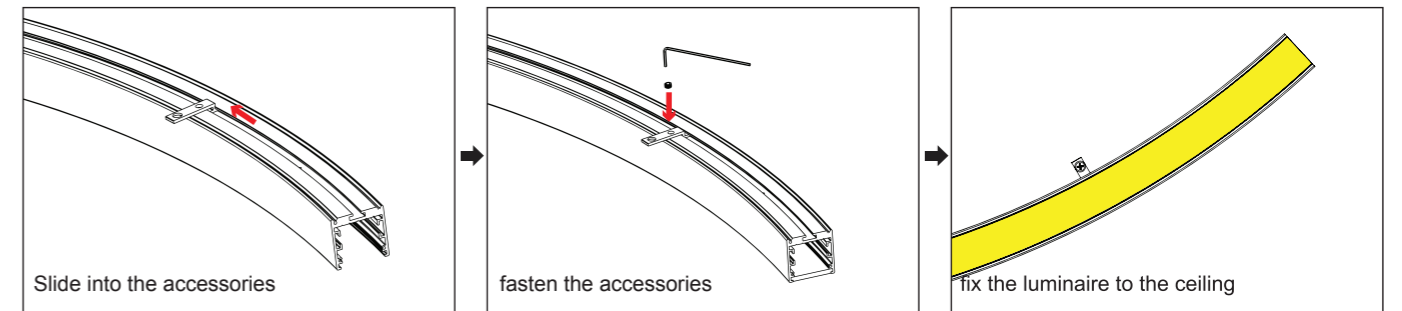
Solution I



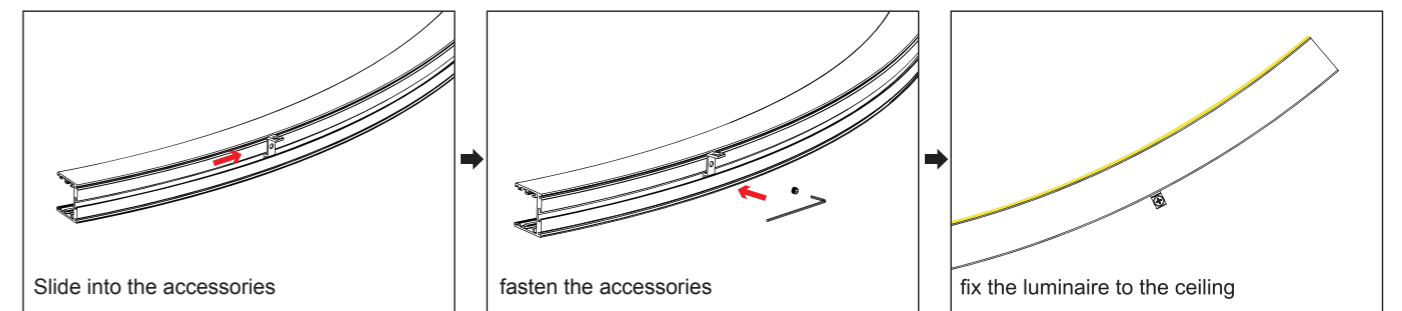
Mount screws at gaps between the light source for fixation

Solution II

Lighting downward



Lighting inward/ lighting outward



Installation of lighting source

Lighting source model



Flexible strip



rigid module

Installation of flexible strip



Pull the wire out of the hole, and slowly tear off the 3M adhesive from the back



Paste it properly according to the length needed

Installation of rigid module



Select the matching rigid module



Align the mounting holes and fasten with the screws

Interconnection of lighting source

Rigid module



Insert the single-core cable into the WAGO connector



Flexible strip



Align the LED strips and solder.(Pay attention to the positive and negative poles)

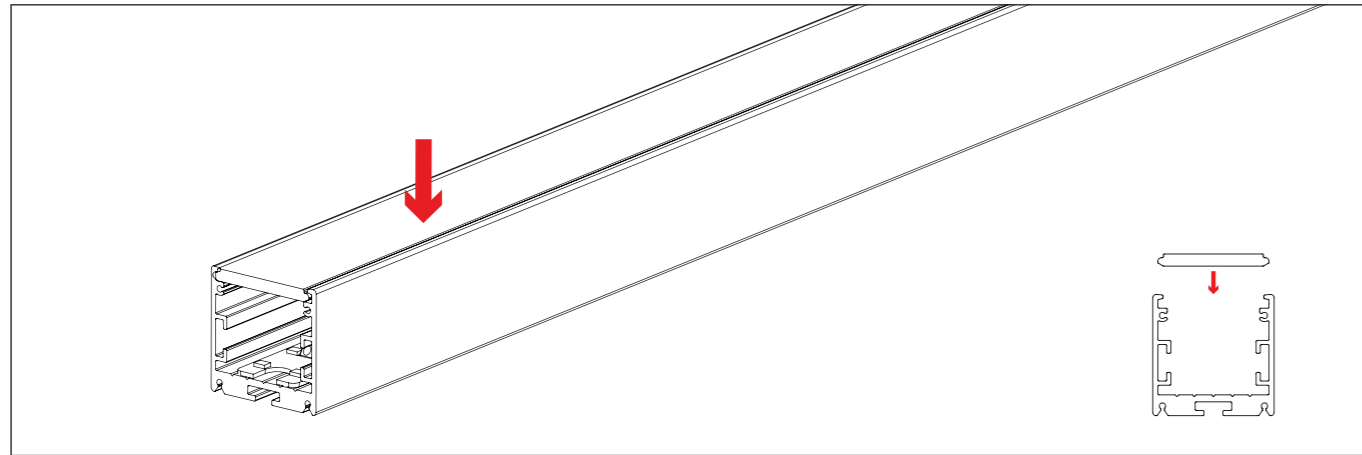
Rigid module and flexible strip



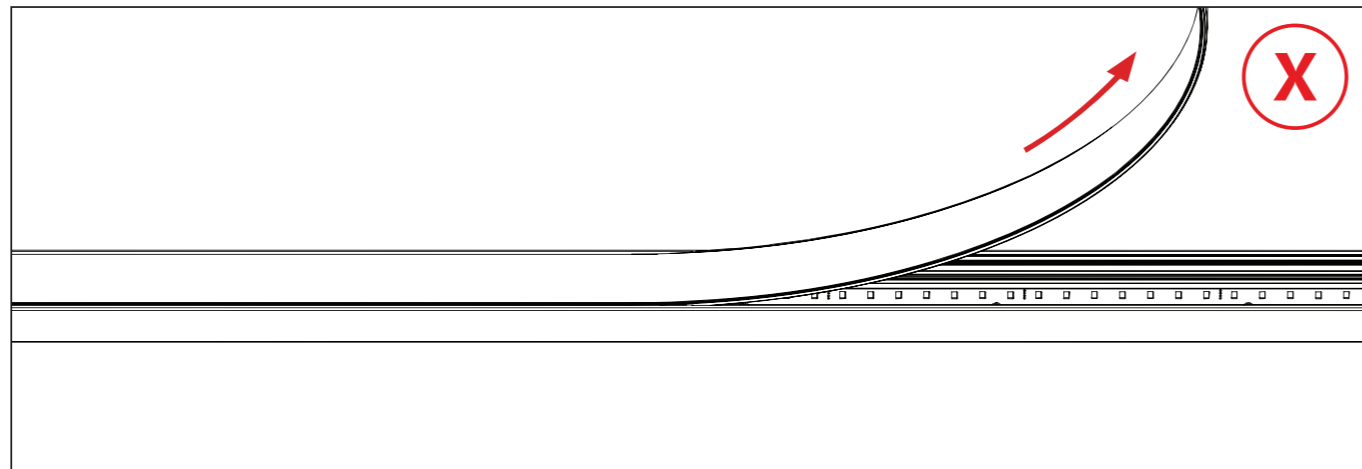
Insert the single-core cable into the WAGO connector and solder.

Installation of diffuser

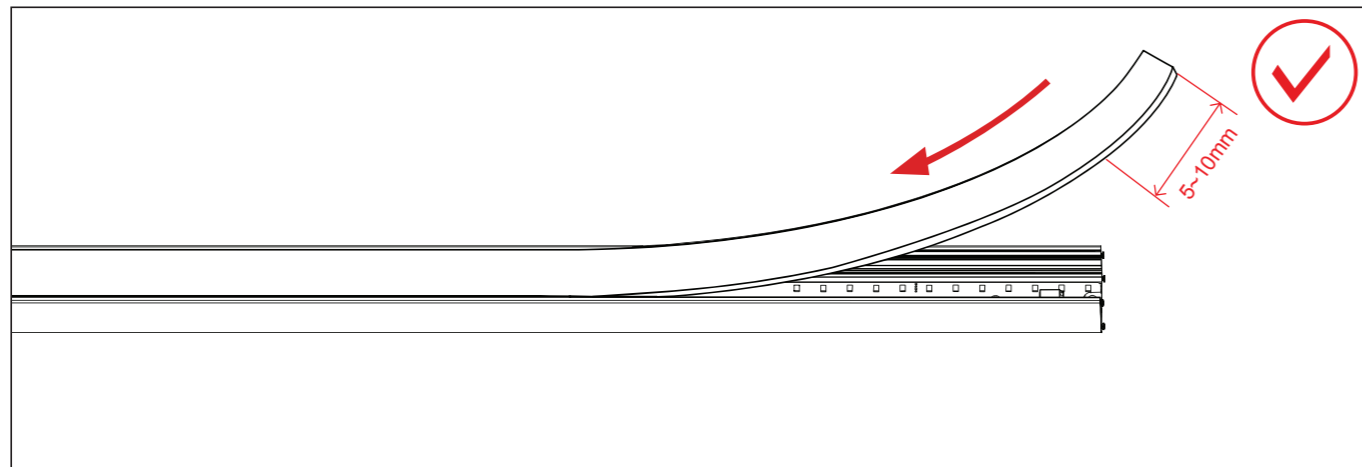
Press the diffuser into the profile, and pay attention to the direction of the diffuser



When installation, please do not stretch the diffuser to prevent the generation of gap at the ends due to material shrinkage



It is recommended to leave an additional length of 5 to 10 mm at the ends, and slowly squeeze it into the profile to prevent the generation of gap at the ends due to material shrinkage.



Instruction of scenario installation

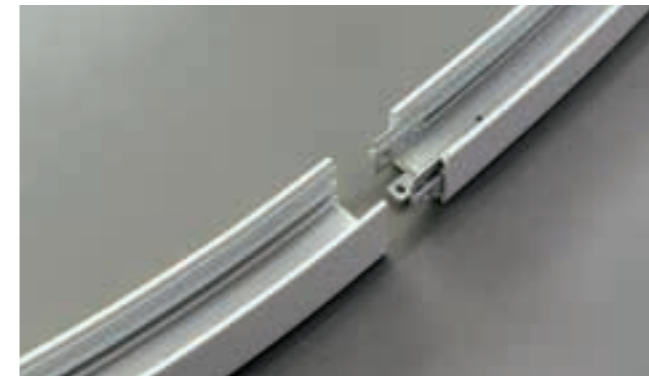
Installation tools



Prepare the installation tools: ①Electric screwdriver ②Gradienter ③Steel tapeline ④Scissors ⑤Screwdriver ⑥Pliers ⑦Marking pen ⑧Electric adhesive tape ⑨Percussion drill

Pendant installation

1.Prepare a 24VDC wire on the ceiling in advance



2. Use four 90° curve products to form a complete circle, and fix one end of the pendant cable onto the luminaire. (recommended number of pendant cable: 0.8M: 3PCS ; 1.5M: 4PCS ; 3M: 8PCS)



3.According to the position of the pendant cable on the luminaire, use a gradienter to determine the drilling position on the ceiling, and mark with a marking pen.



4. Drill at the marked position with a percussion drill, and fix the connector of one end of the pendant cable to the hole.



5. Connect the prepared pendant cable of the luminaire to the connector on the ceiling, and adjust the height of the pendant cable and remove the surplus part.



6. Fasten the wire of the light source together with the pendant cable, and power on to light up the luminaire



7. Finished

Surface mounted installation

1. Prepare a 24VDC wire on the ceiling in advance



2. Interconnect all the profile components, and fasten the end cap to the profile with screws



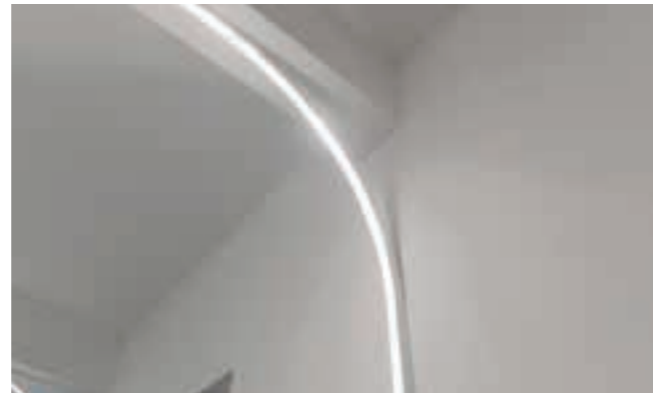
3. Mount the light source into the profile (installation details are referred to in Page9)



4. Use a gradienter to determine the drilling position of profile installation on the ceiling, and mark with a marking pen



5. Drill at the marked position with a percussion drill, and fix the interconnected profile onto the wall



6. Power on to test the luminaire, and install the diffuser if it works well



7. Mount the diffuser into the luminaire slowly, and power on to light up the luminaire



8. Finished



Telephone: 1300 650 625
E-mail: sales@greenlux.com.au
Web: www.greenlux.com.au
Address: 9/331 Ingles Street,
Port Melbourne VIC 3207 Australia