



bedroom

corridor

bedroom

kitchen

hall

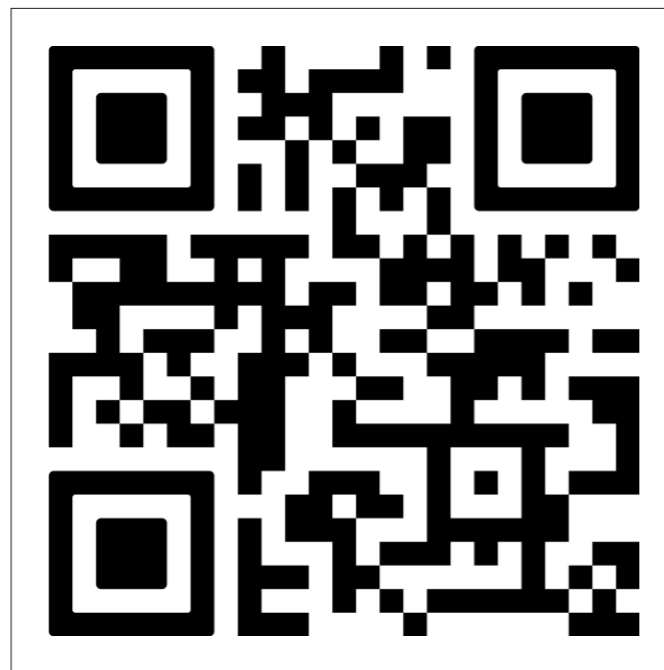
outdoor

1. Download App

Please download the App Smart Life from the App store, or scan the QR code below



For User Manual, please scan below QR code and refer to the details.

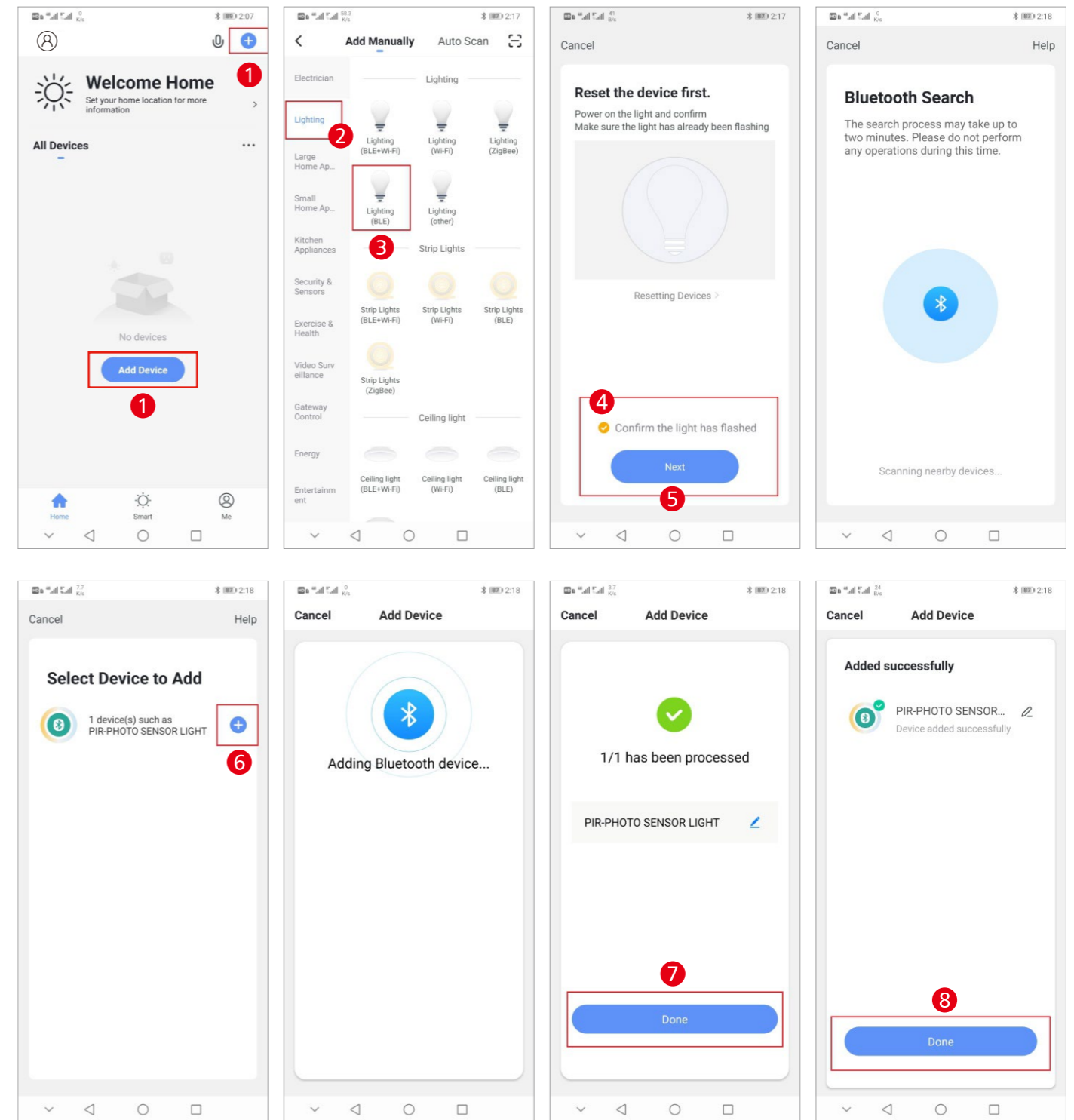


2. Add Bluetooth device

2.1 Please kindly ensure that the lamp is in a network configuration mode, indicated by the lamp flashing rapidly

2.2 Please ensure that Bluetooth is enabled on your mobile phone

2.3 Open the "Smart Life" APP to proceed with the pairing process



3. Connect the Bluetooth gateway using the steps provided below

