

# DL/TL100 Series

## LED Downlight / LED Track Light



- LM80
- 3/5 Yrs Warranty
- 
- SAA
- IP20
- IP40
- TUV

37 Chelmsford Street  
Williamstown North VIC 3016 Australia

info@greenlux.com.au  
enquiries@greenlux.com.au

T 1300 650 625  
www.greenlux.com.au



## Introduction

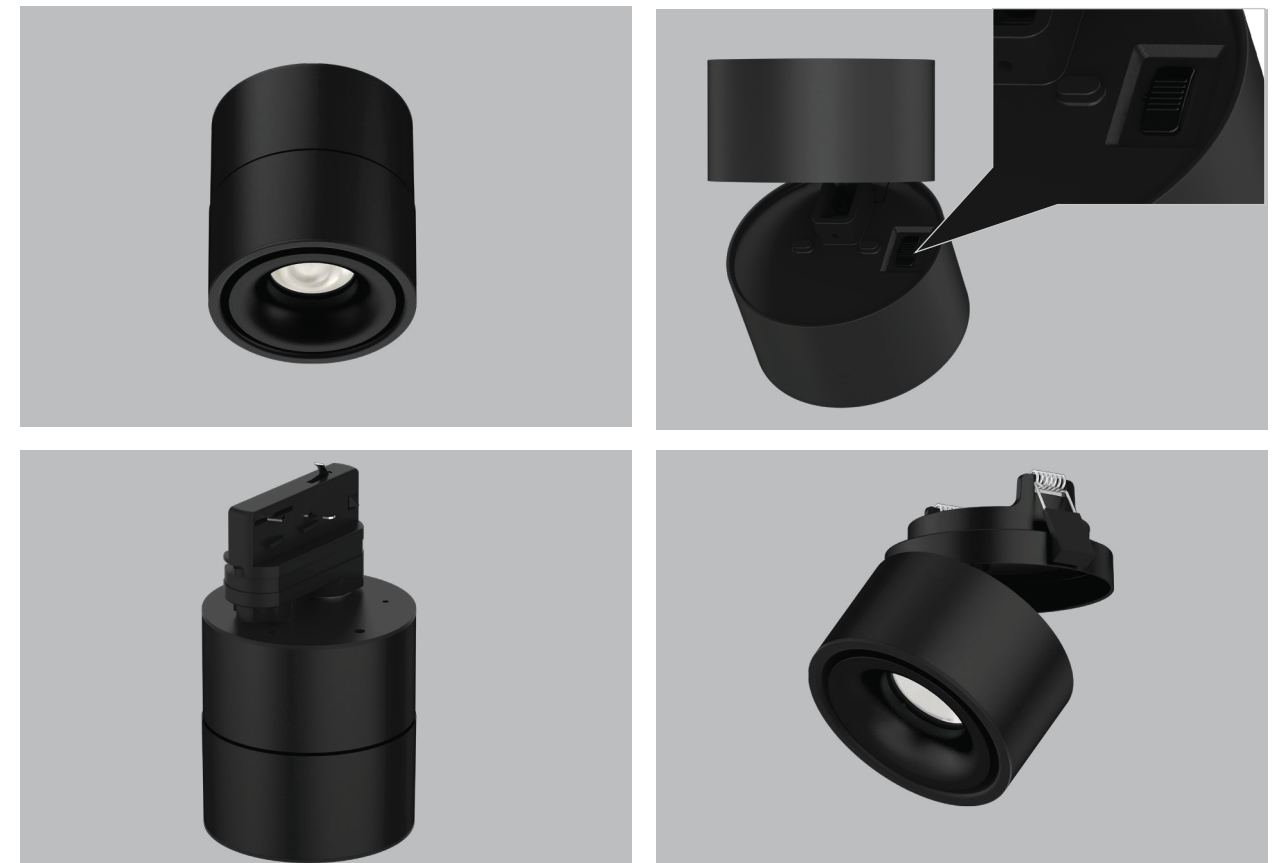
The DL/TL100 Series LED Downlight features a unique vertically and horizontally rotary design, allowing for surface mounting, recessed, and track installation. It utilizes a high lumen COB light source and a high transmittance PMMA lens, resulting in a uniform light output and minimal glare. To cater to various application needs, it is equipped with adjustable CCT and replaceable reflectors in black, white, and golden colour options.

## Features

- Unique rotary design: GUDL100A surface mounted, GUDL100B recessed, GUTL100A track install.
- Replaceable frame: Black, White, Golden colour options.
- Interchangeable CCT (2700K + 4000K + 6000K) with slide switch.
- Low glare design, UGR<19.
- Vertical rotary 90°, horizontal rotary 320°.
- Internal flicker free driver.
- GUDL100B support triac dimming.

## Application Areas

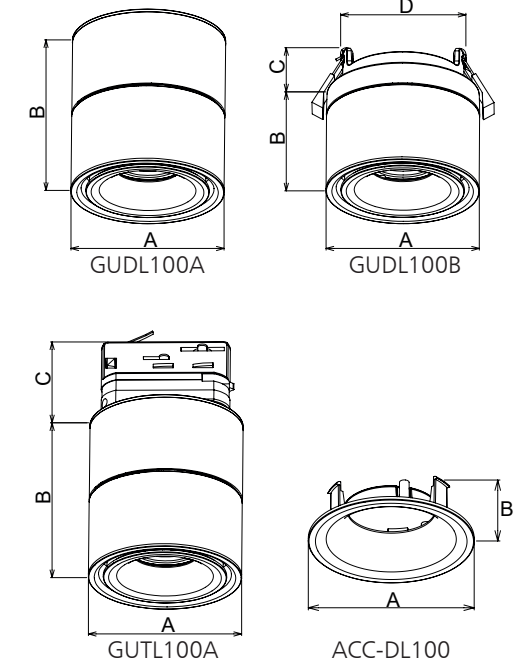
It's widely used in indoor lighting area, such as supermall, hotel, office, home etc.





## Measurement

Code	Dimension(mm)				Size(mm)
	A	B	C	D	
GUDL100A-10W	100	108			Ø100*108
GUDL100A-15W					
GUDL100B-10W	100	70	30	85	Ø100*100
GUDL100B-15W					
GUDL100B-10W-D					
GUDL100B-15W-D					
GUTL100A-10W	100	108	58		Ø100*166
GUTL100A-15W					
ACC-DL100	80	24.5			Ø80*24.5



## Technical Data Sheet

Code No.	GUDL100A		GUDL100B		GUTL100A			
Dimension(mm)	Ø100*H108		Ø100*H100		Ø100*H166			
Cutout (mm)	-		Ø85~95		-			
Watt(W)	10W	15W	10W	15W	10W	15W		
Rated Input Voltage(V)	AC230V							
Input Voltage(V)	AC220-240V							
LED Module Input	-							
Light Source	COB							
SDCM	<6 (1-CCT)							
CCT(K)	1-CCT: 2700K/3000K/4000K/5000K    3-CCT: 2700K + 4000K + 6000K							
CCT Selection DIP Switch	Yes							
Luminous Flux (lm) ±5%	Non-DIM	1-CCT	950-1100	1350-1550	950-1100	1350-1550	950-1100	1350-1550
		DIM	900-1090	-	900-1050	1350-1550	900-1090	-
	Non-DIM	3-CCT	700-900	1000-1250	700-900	1000-1250	700-900	1000-1250
		DIM	650-850	-	650-850	1000-1250	650-850	-
CRI	≥80							
Beam Angle (°)	20°/36°							
UGR	<19							
LED Driver	Built-in		Built-out		Built-in			
Dimming Option	Triac	-	Triac	Triac	-	-		
Sensor	-							
Emergency Kits	-							
Electrical Class	Class II							
Ingress Protection (IP Rating)	IP40			IP20				
Impact Resistance (IK Rating)	-							
Product Finishing(Base)	White RAL9016/Black RAL9005							
Materials of Optics	PMMA							
Materials of Housing	Aluminium Die-casting							
Lifetime (hr)	50000							
Glow wire test (°C)	750°C							
Operating Temp. (°C)	-20°C ~45°C							
Storage Temp. (°C)	-20°C ~65°C							
Installation	Surface mount		Recessed		Track			

## Driver Datasheet (Non-dimmable) GUDL100A / GUTL100A

Total load wattage		10W	15W
Output	Output Voltage range	DC30-40V	
	Rated output current	250mA	350mA
	Line Regulation	±5%	
	Setup, Rise Time	≤500ms @230V	
	Flickering Index	0.5%(NO RISK)	
Input	Input Voltage	AC200-264V	
	Rated Input Voltage(V)	AC220-240V	
	Frequency	50/60Hz	
	Input Current	≤0.06A	≤0.09A
	Rated Input Current	≤0.06A	≤0.08A
	Power Factor	0.9	
	THD	<20% @230V	
	Efficiency	≥86%	
	No load wattage	<0.5W@230V	
Protection	Short circuit protection	Pass	
	Over voltage protection	Pass	
	Over temperature protection	Pass	
Safety & EMC	Withstand voltage	I/P-O/P: 3.75KVvac, <5mA 60S	
	Isolation Resistance	I/P-O/P: 500VDC, ≥100M Ω	
	Surge	IEC/EN61000-4-5( P<25W; L-N:500V)	
	EMC Emission	EN55015, EN61000-3-2	
EMC Immunity	EN61000-4-2,3,4,5,6,8,11; EN61547		

## Driver Datasheet (Non-dimmable) GUDL100B

Total load wattage		10W	15W
Output	Output Voltage range	DC30-40V	
	Rated output current	250mA	350mA
	Line Regulation	±5%	
	Setup, Rise Time	≤500ms @230V	
	Flickering Index	0.5%(NO RISK)	
Input	Input Voltage	AC200-264V	
	Rated Input Voltage(V)	AC220-240V	
	Frequency	50/60Hz	
	Input Current	≤0.06A	≤0.09A
	Rated Input Current	≤0.06A	≤0.08A
	Power Factor	0.9	
	THD	<20% @230V	
	Efficiency	≥86%	
	No load wattage	<0.5W@230V	
	Protection	Short circuit protection	Pass
Over voltage protection		Pass	
Over temperature protection		Pass	
Safety &EMC	Withstand voltage	I/P-O/P:3.75KVac, <5mA 60S	
	Isolation Resistance	I/P-O/P: 500VDC, ≥100M Ω	
	Surge	IEC/EN61000-4-5( P<25W; L-N:500V)	
	EMC Emission	EN55015, EN61000-3-2	
	EMC Immunity	EN61000-4-2,3,4,5,6,8,11; EN61547	

## Driver Datasheet (Triac Dimmable) GUDL100B

Total load wattage		10W	15W
Output	Output Voltage range	DC30-40V	
	Rated output current	230mA	350mA
	Line Regulation	±5%	
	Setup, Rise Time	≤500ms @230V	
	Flickering Index	5%(LOW RISK)	4%(LOW RISK)
Input	Input Voltage	AC200-264V	
	Rated Input Voltage(V)	AC220-240V	
	Frequency	50Hz	
	Input Current	≤0.06A	≤0.09A
	Rated Input Current	≤0.06A	≤0.08A
	Power Factor	0.9	
	THD	<20% @230V	
	Efficiency	≥80%	≥83%
	No load wattage	<0.5W@230V	
	Protection	Short circuit protection	Pass
Over voltage protection		Pass	
Over temperature protection		Pass	
Safety &EMC	Withstand voltage	I/P-O/P:3.75KVac, <5mA 60S	
	Isolation Resistance	I/P-O/P: 500VDC, ≥100M Ω	
	Surge	IEC/EN61000-4-5( P<25W; L-N:500V)	
	EMC Emission	EN55015, EN61000-3-2	
	EMC Immunity	EN61000-4-2,3,4,5,6,8,11; EN61547	

## Driver Datasheet (Triac Dimmable) GUDL100A / GUTL100A

Total load wattage		10W
Output	Output Voltage range	DC23-40V
	Rated output current	230mA
	Line Regulation	±5%
	Setup, Rise Time	<500ms @230V
	Flickering Index	<5%(NO RISK)
Input	Input Voltage	AC200-264V
	Rated Input Voltage(V)	AC220-240V
	Frequency	50Hz
	Input Current	≤0.06A
	Rated Input Current	≤0.05A
	Power Factor	0.9
	THD	<20% @230V
	Efficiency	≥78%
	No load wattage	<0.5W@230V
Protection	Short circuit protection	PASS
	Over voltage protection	PASS
	Over temperature protection	PASS
Safety &EMC	Withstand voltage	I/P-O/P:3.75KVac, <5mA 60S
	Isolation Resistance	I/P-O/P: 500VDC, ≥100M Ω
	Surge	IEC/EN61000-4-5( P<25W; L-N:500V)
	EMC Emission	EN55015, EN61000-3-2
	EMC Immunity	EN61000-4-2,3,4,5,6,8,11; EN61547