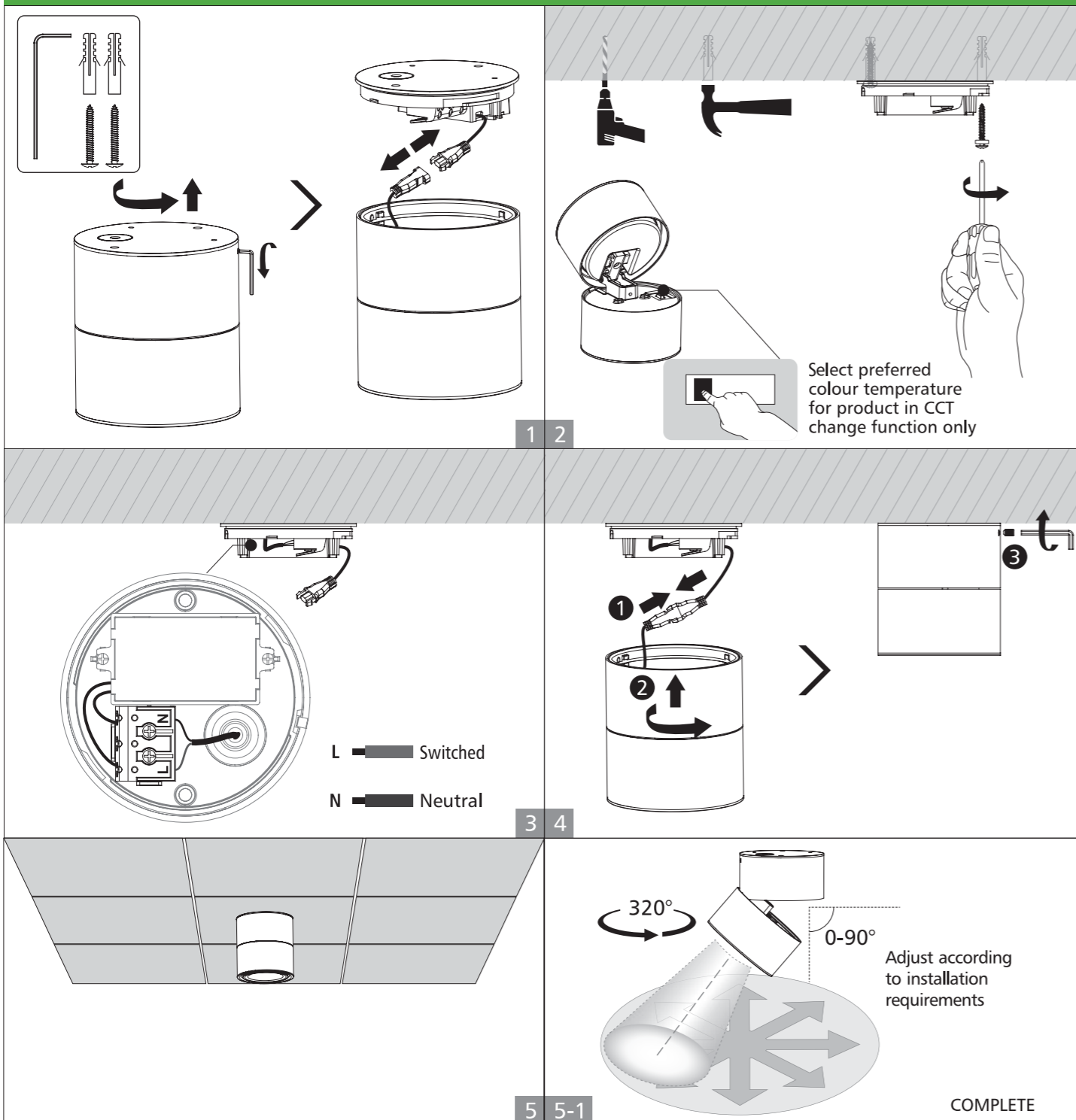


User Manual

DL/TL100 Series LED Downlight / LED Track Light

Screw surface mounted installation



1 2 Select preferred colour temperature for product in CCT change function only

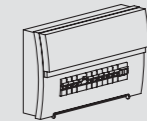
3 4 L — Switched
N — Neutral

5 5-1 320°
0-90°
Adjust according to installation requirements
COMPLETE

WARNING



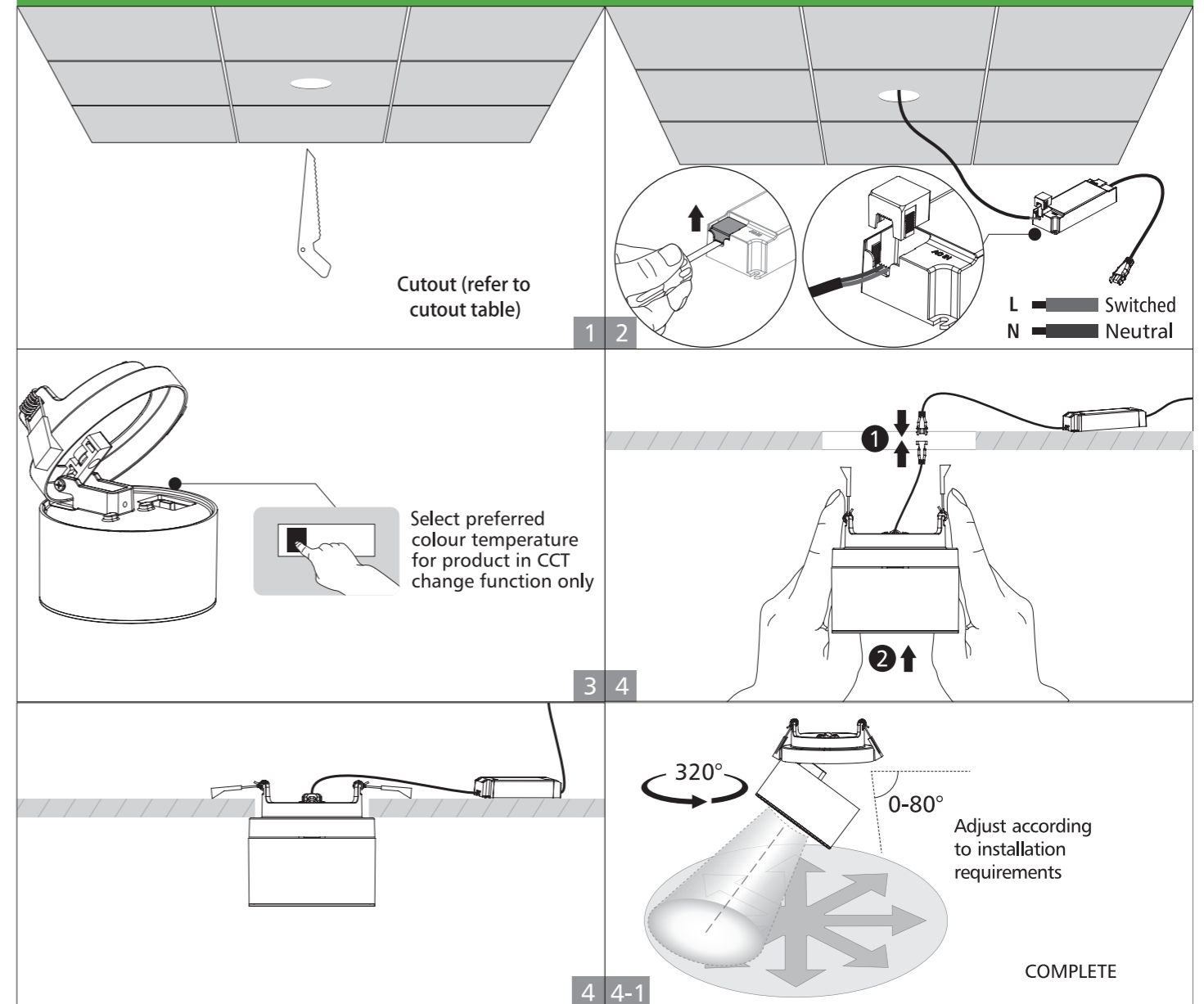
1. Switch off power supply before installation / maintenance.
2. Switch on after completing installation and examination of the circuit.
3. The Panel Light must be installed and maintained by professional electrician.



**Turn Off
Power Supply**

Before beginning any installation, turn off the power supply. To finish the installation correctly, read the instructions and make sure you have all the necessary tools and accessories.

Downlight with external driver



1 2 Cutout (refer to cutout table)

L — Switched
N — Neutral

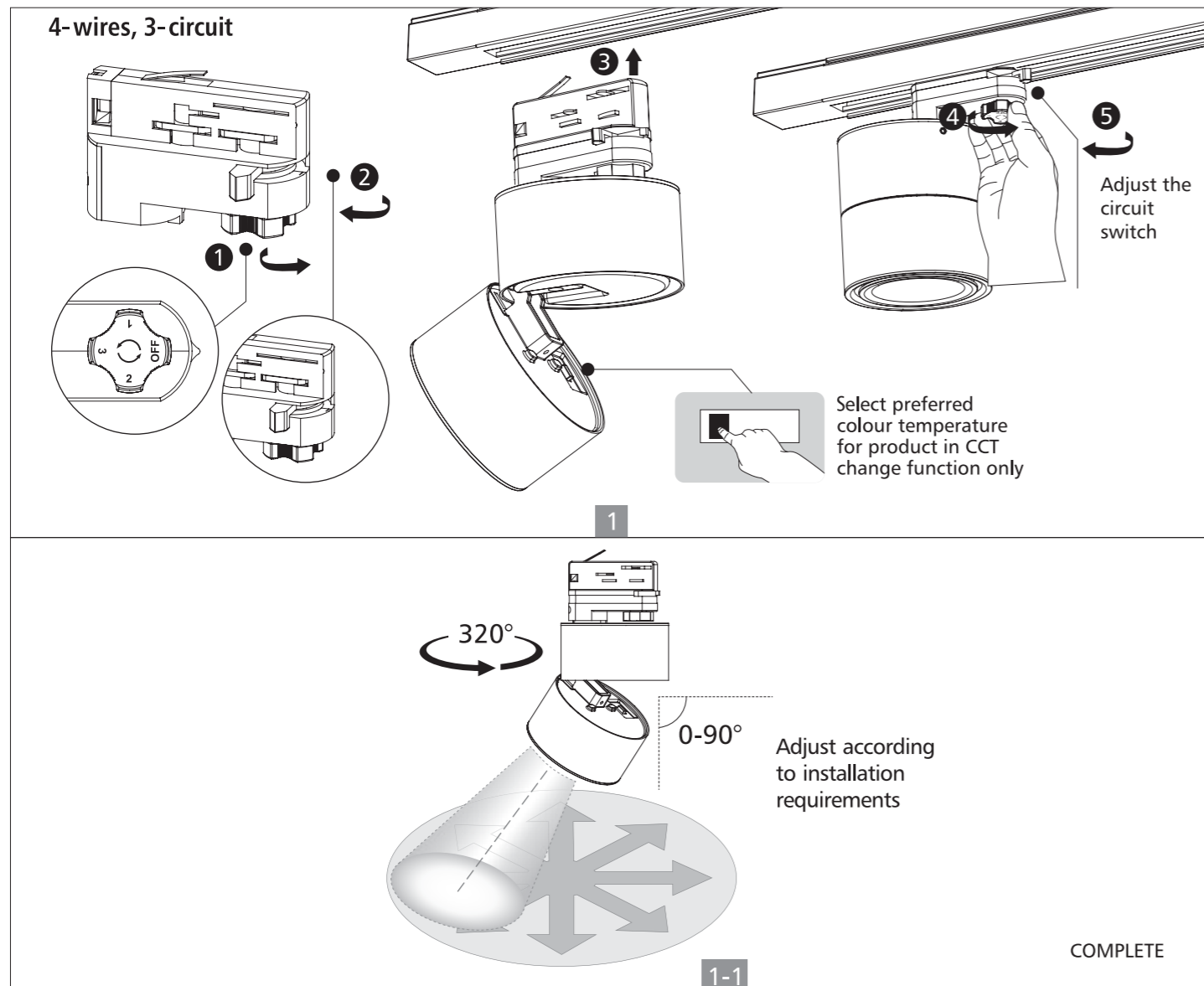
3 4 Select preferred colour temperature for product in CCT change function only

4 4-1 320°
0-80°
Adjust according to installation requirements
COMPLETE

User Manual

DL/TL100 Series LED Downlight / LED Track Light

Track installation (Please select according to the actual product)



Replaceable reflector

