

ECLIPSE SLIM SERIES LED CANOPY- SENSOR OPTION

PARKING GARAGE ENTRANCE CANOPY 25-75W

IP65



FCC

CONSTRUCTION

Classic square design with robust die-cast heatsink and UV stabilized PC lens features IP65 and IK10 physical protection.

SENSOR-READY

Available with internal Bi-level microwave sensor that can be remotely controlled which offers dynamic energy saving based on occupancy.

Power Selectable

60W version available with DIP switch to change the power to 40W or 25W in field, one SKU for 3 different needs, easy stock control.

OPTICS

Unique Fresnel lens design with frosted finish features wide&even light distribution and low glare.



Microwave Bi-level Sensor

Order Combo

Series	Power	Color temperature	Beam Angle	DIM	Voltage	CRI	Finish	Mounting	Sensor	Accessory
ECLIPSE SLIM	25W	4000K	160°	0-10V	120-277V	80+	WHITE	Surface-mount	MIC ^①	EM ^② RM ^③
	40W	5000K		DIM to OFF			BRONZE	Pole-mount		
	60W							Surface-mount with conduit		
	70W									

Lumen Table

Model No.	Power	Beam Angle	4000K Ra80		5000K Ra80	
			Lumens	LPW	Lumens	LPW
GBECL-25W-S	25	160°	3308	132	3375	135
GBECL-40W-S	40	160°	5292	132	5400	135
GBECL-60W-S	60	160°	7938	132	8100	135
GBECL-70W-S	70	160°	10633	152	10850	155

Above test results are based on initial stage and with AC277V input.

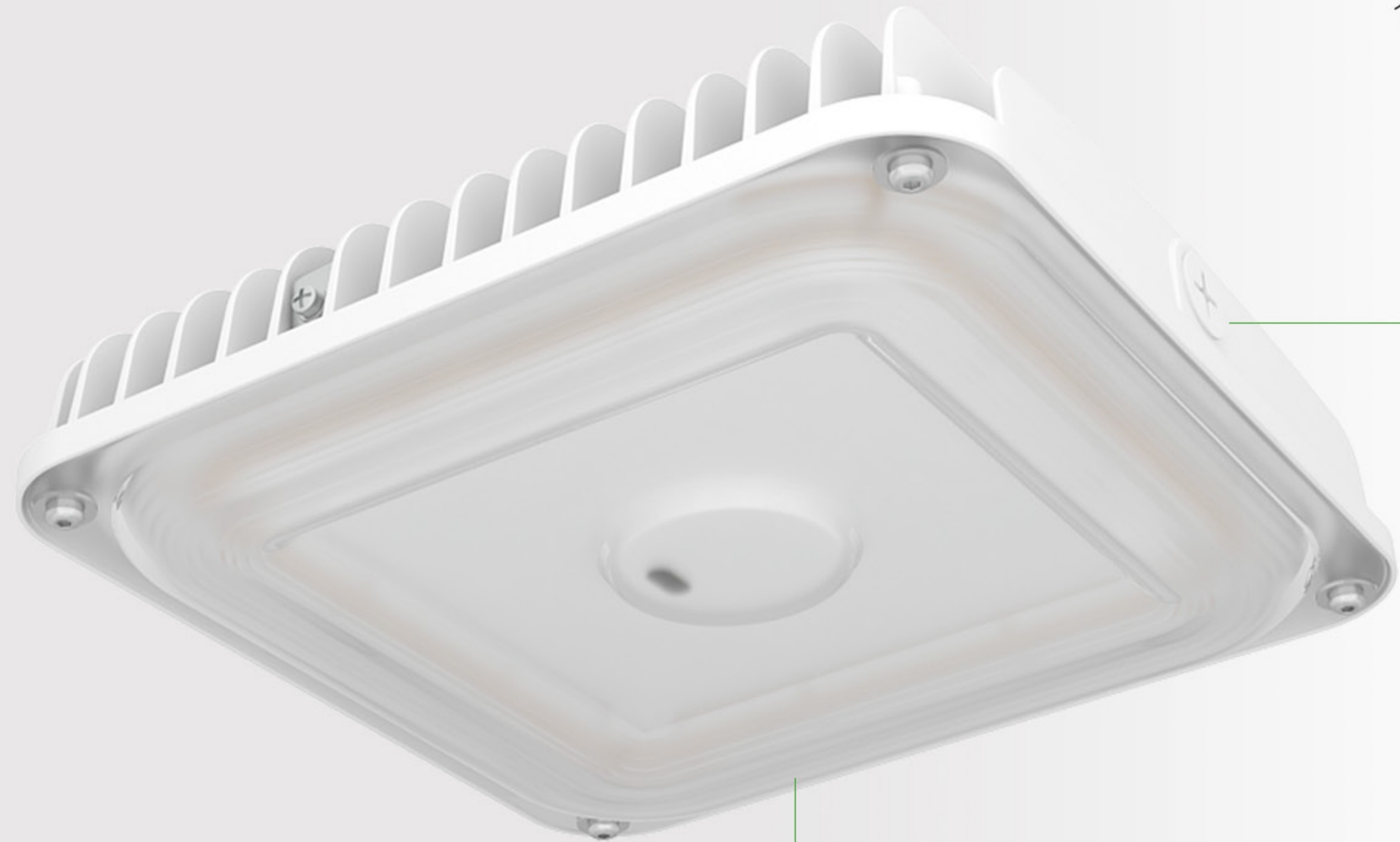
Remarks

- ① MIC: Microwave sensor with bi-level dimming and daylight harvesting function, MAX 8M
- ② EM: 10W 90mins output external emergency kit, surface-mount with waterproof conduit
- ③ RM: Remote controller for re-setting of MIC sensor working pattern.

Accessories

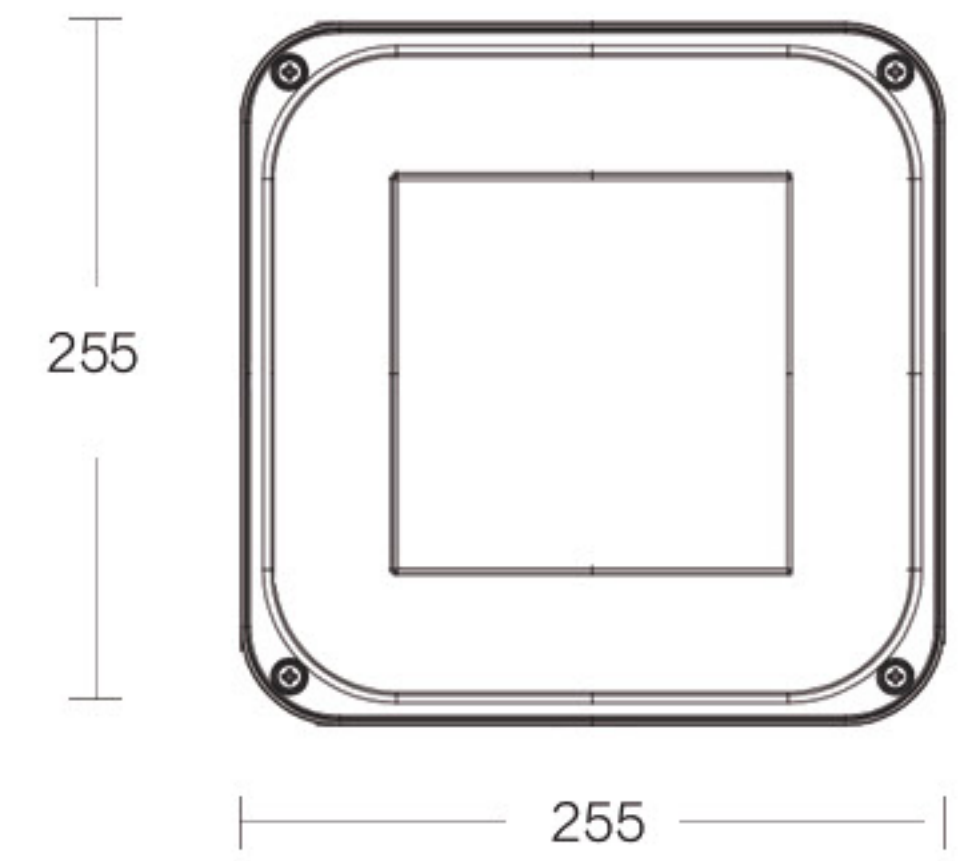
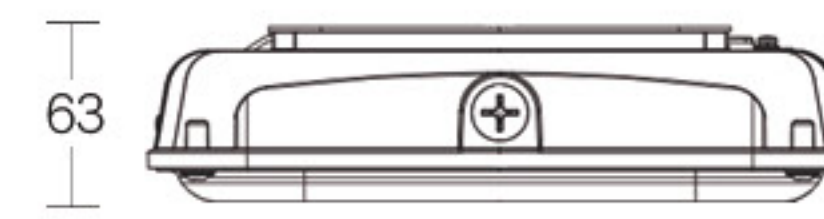


10W Emergency Kit

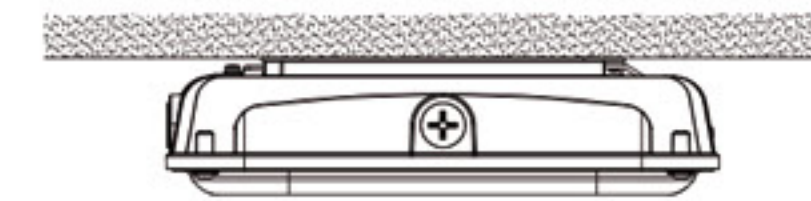


Remote controller for sensor

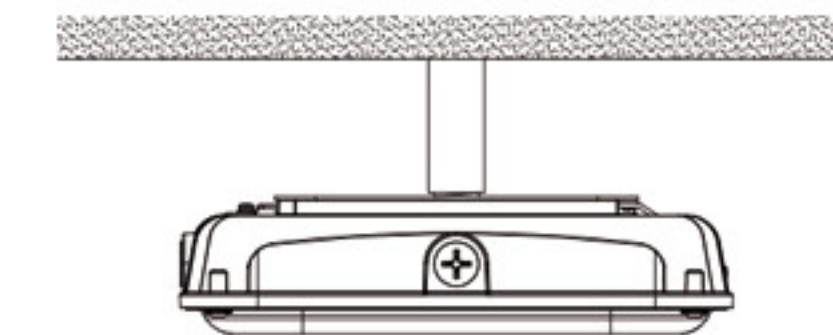
Dimension (mm)



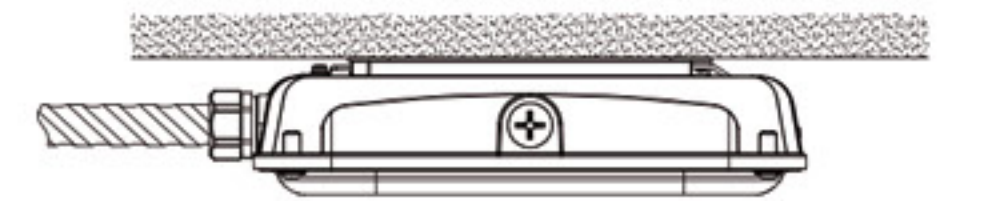
INSTALLATION



Surface-mount

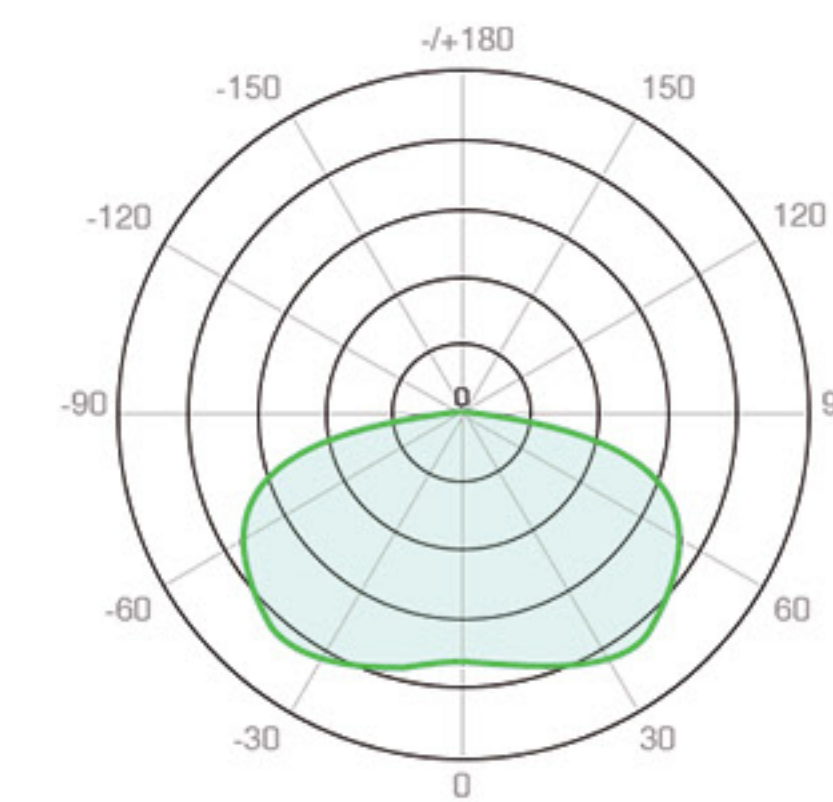


Pole-mount



Surface-mount with conduit wiring

PHOTOMETRIC



160°