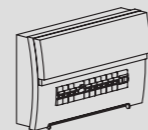


User Manual

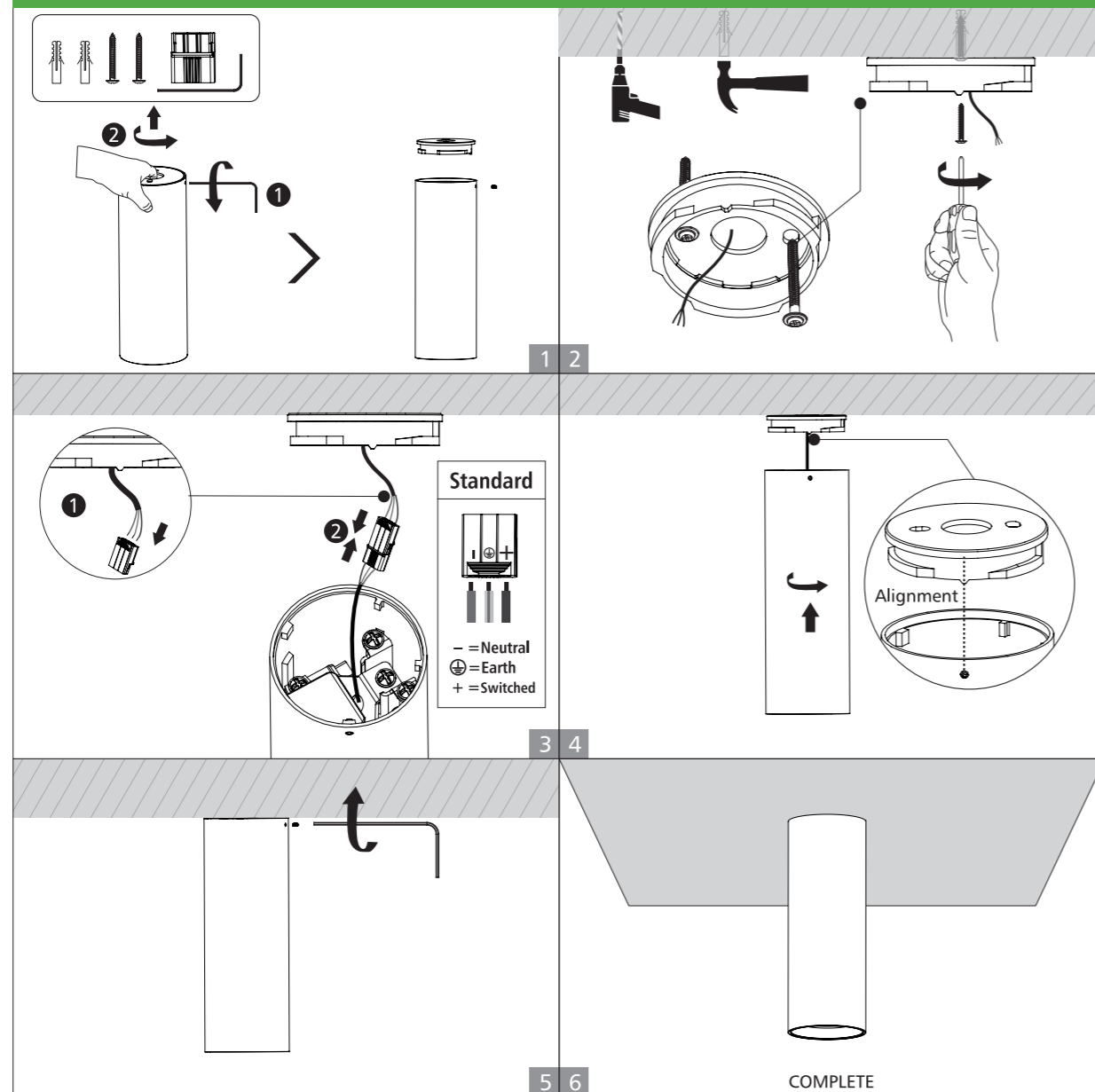
CUSP 833 Series

WARNING ⚡

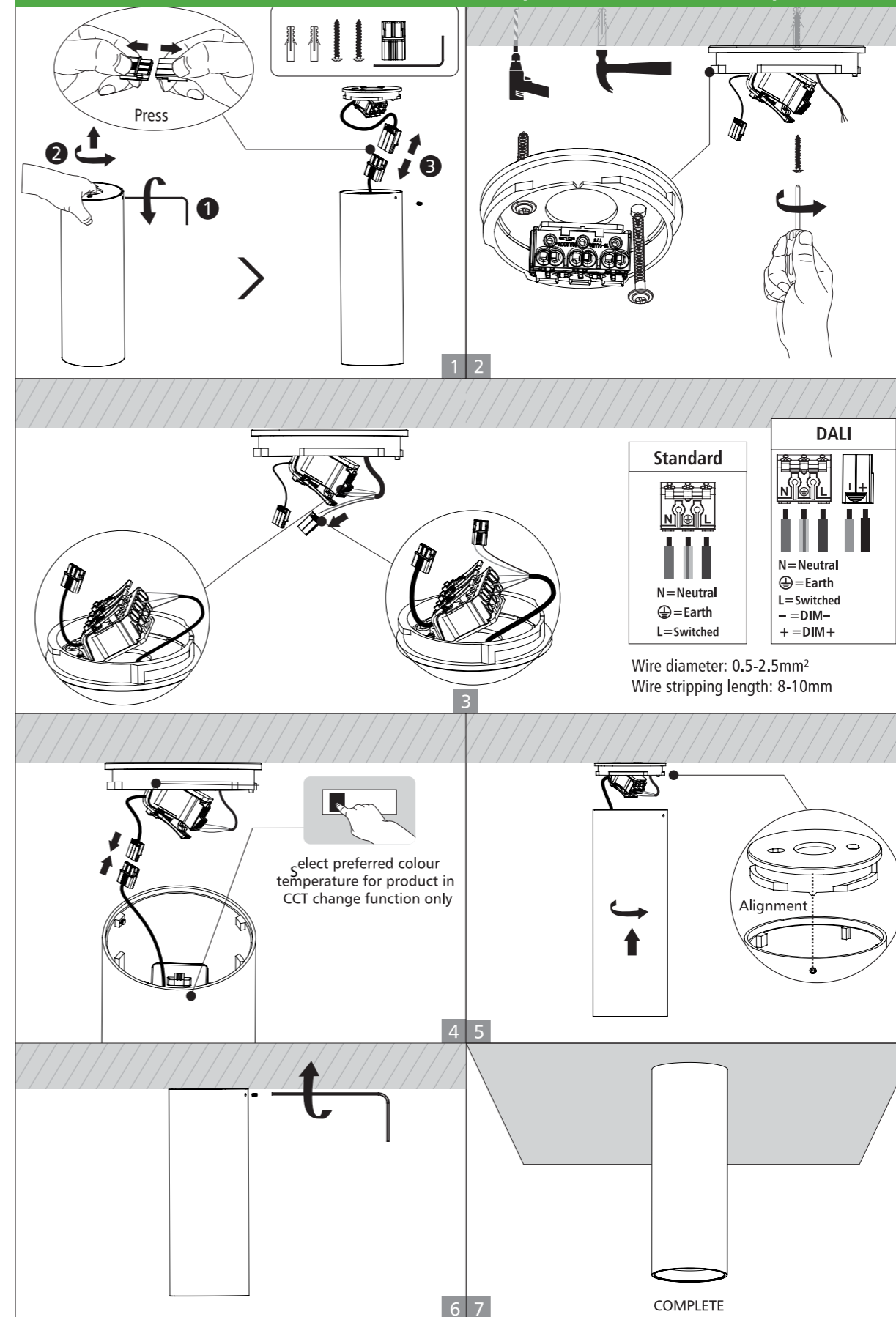
1. Switch off power supply before installation / maintenance.
2. Switch on after completing installation and examination of the circuit.
3. The Panel Light must be installed and maintained by professional electrician.



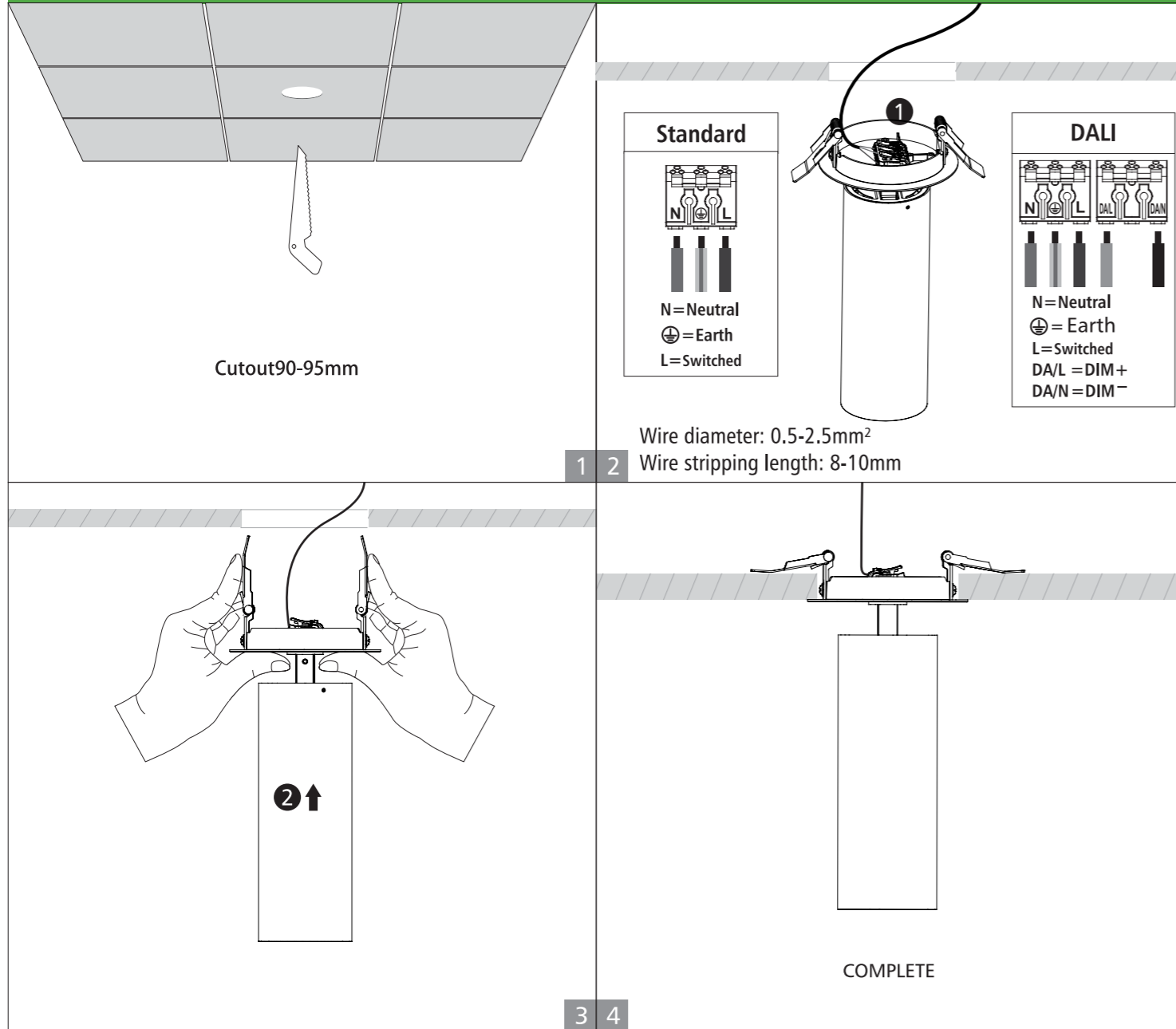
1-1. Surface mounted installation (55mm)



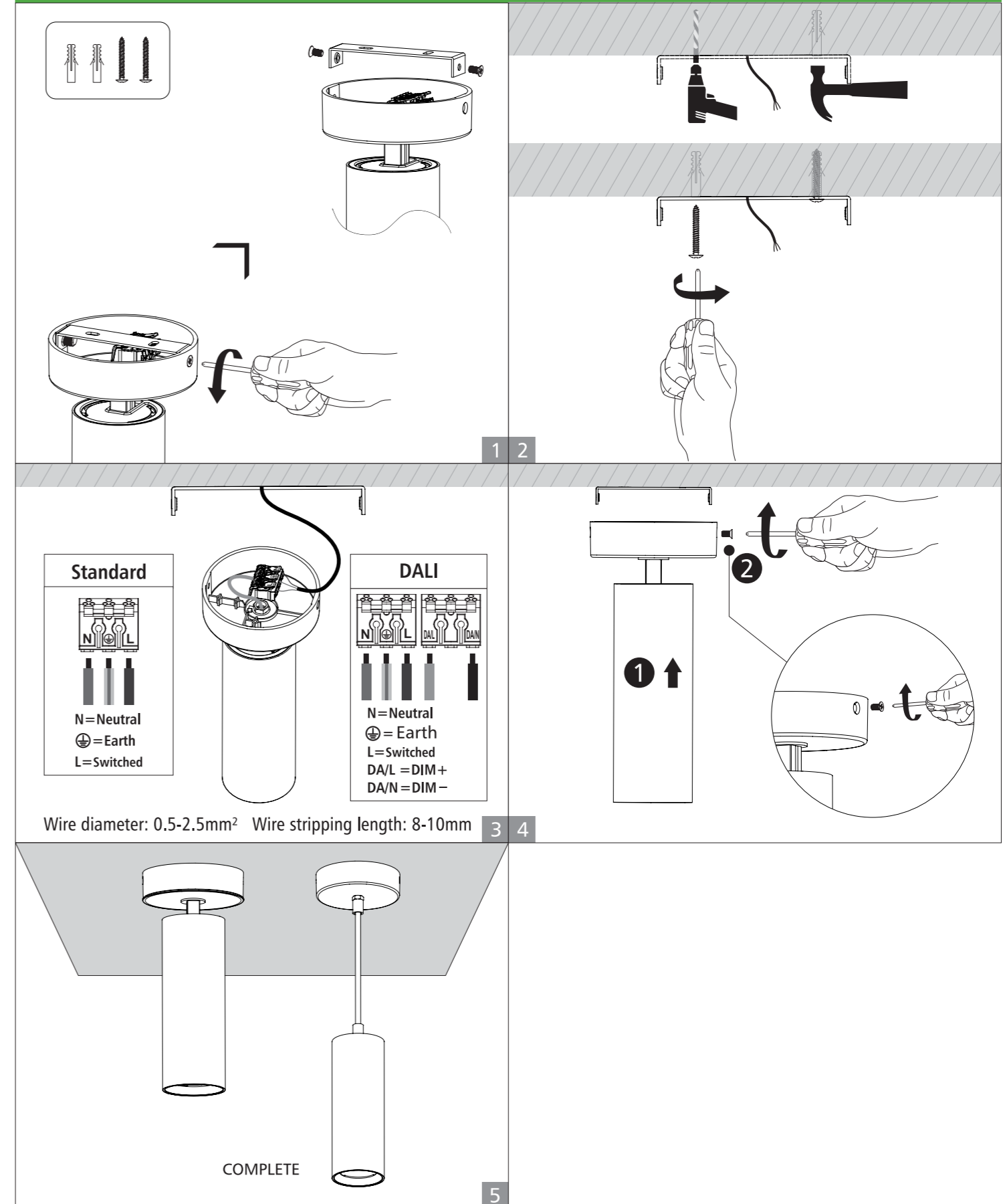
1-2. Surface mounted installation (65mm/85mm/100mm)



2. Recessed installation

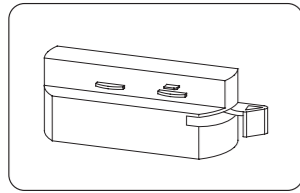


3. Surface mounted installation (With round ceiling plate)

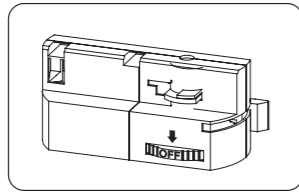


4. Track installation

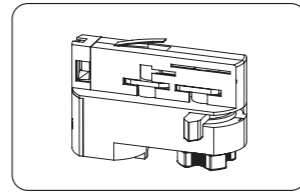
Select corresponding adapter before installation



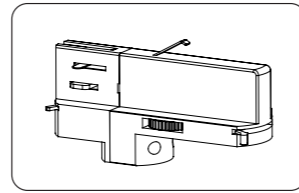
2-wires, 1-circuit



3-wires, 1-circuit



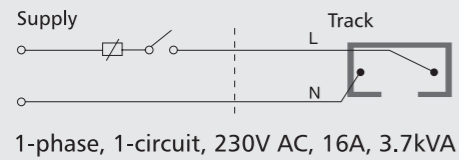
4-wires, 3-circuit



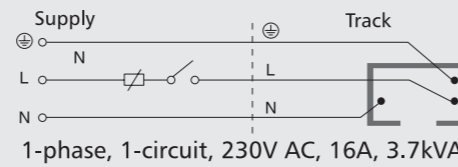
6-wires, 3-circuit (DALI)

Wiring Diagram (Please select according to the actual product)

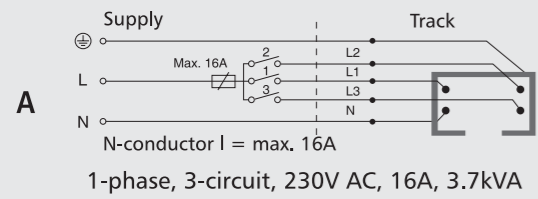
2-wires, 1-circuit



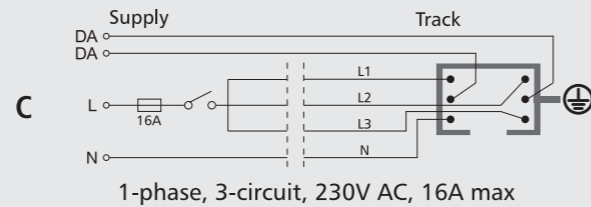
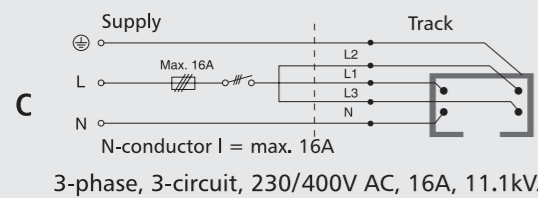
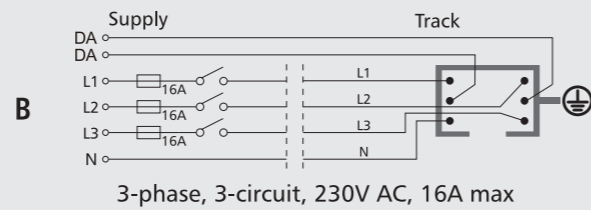
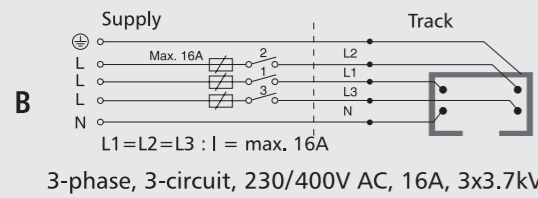
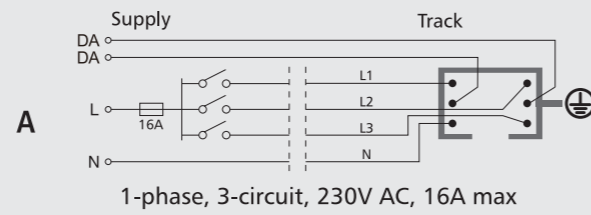
3-wires, 1-circuit



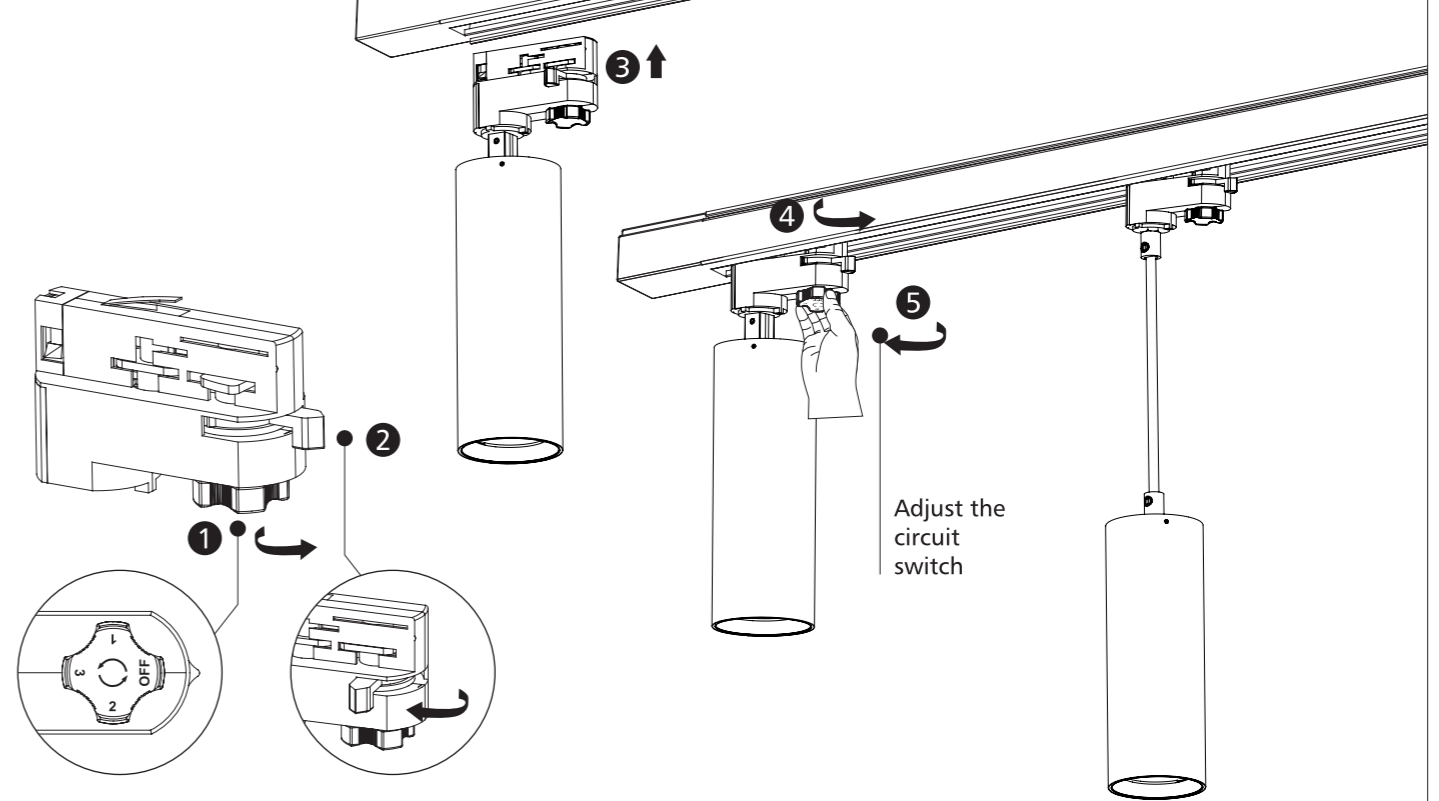
4-wires, 3-circuit



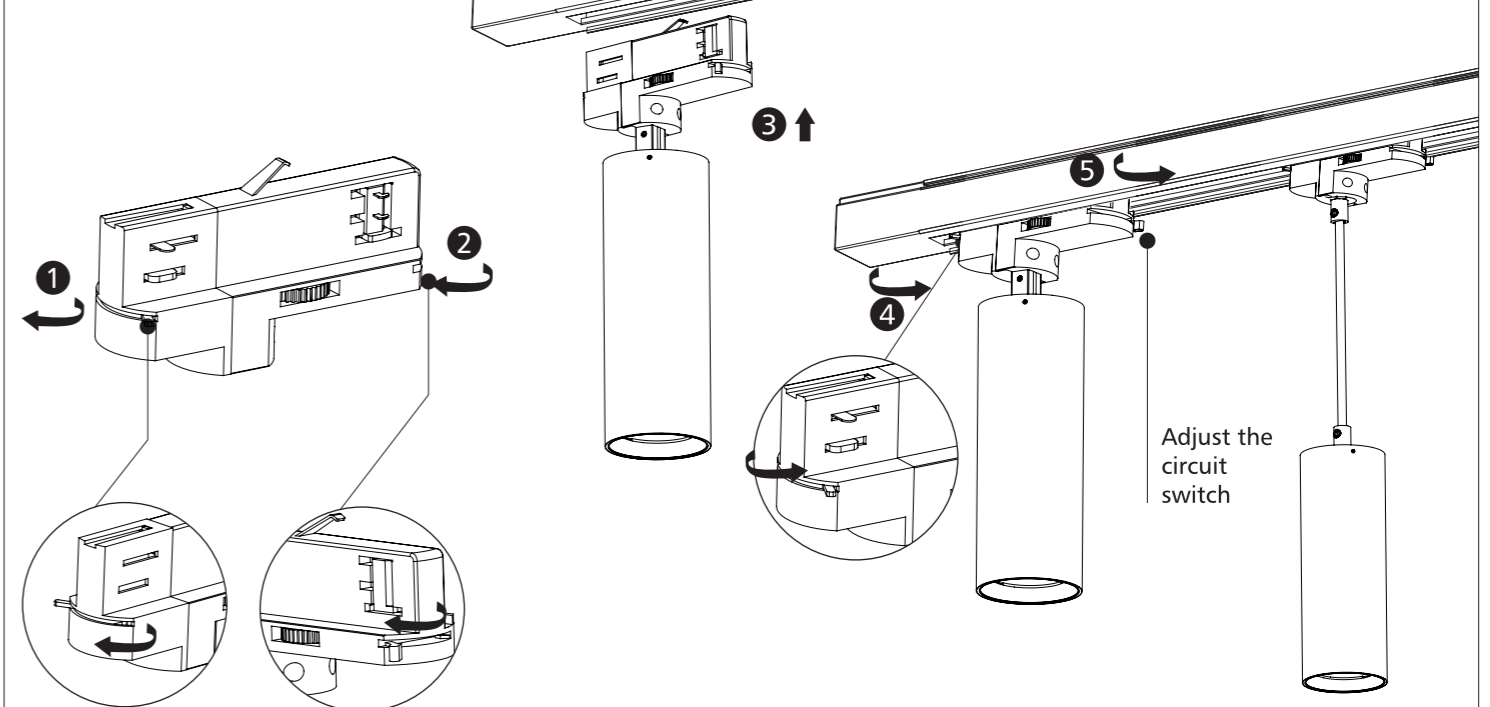
6-wires, 3-circuit (DALI)



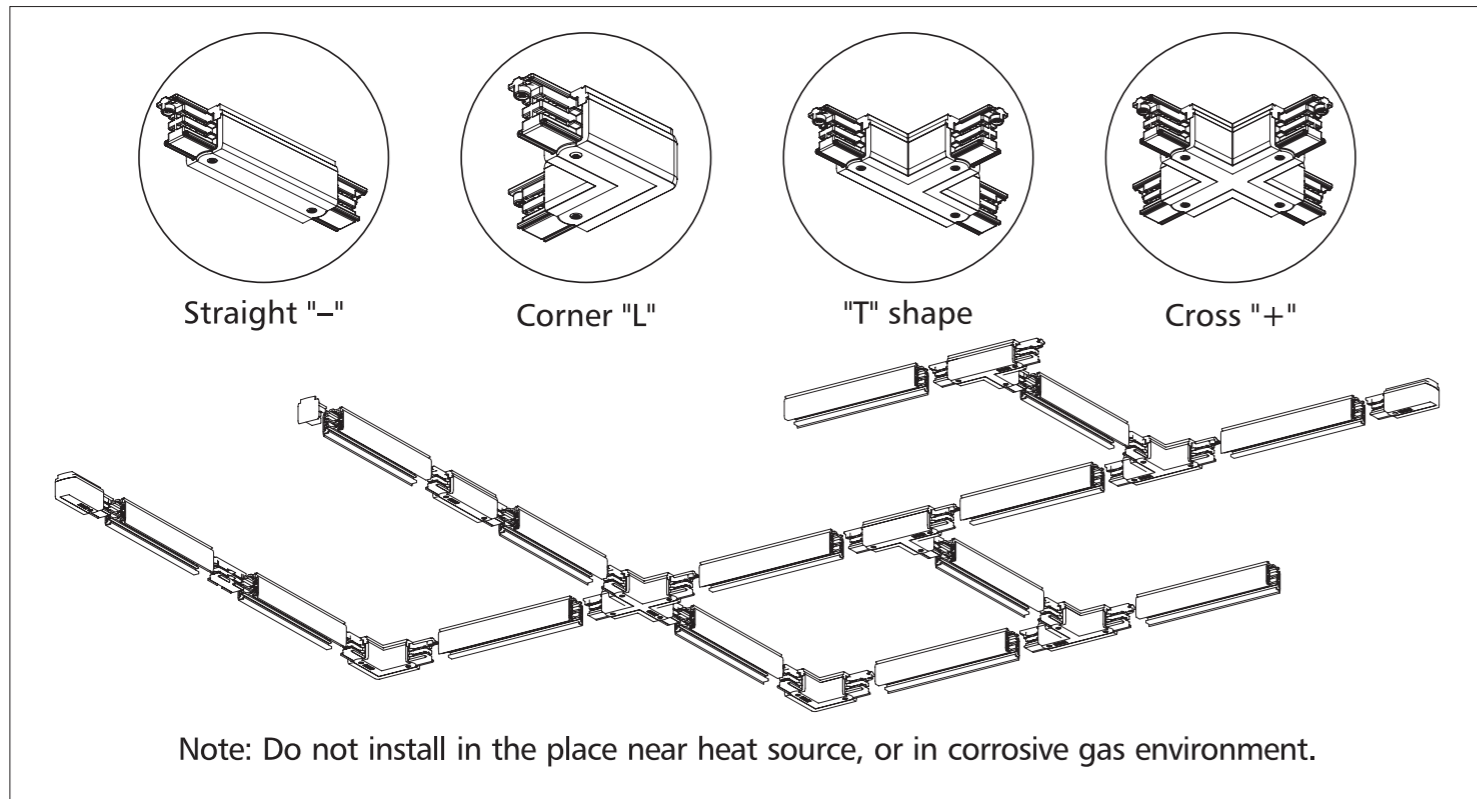
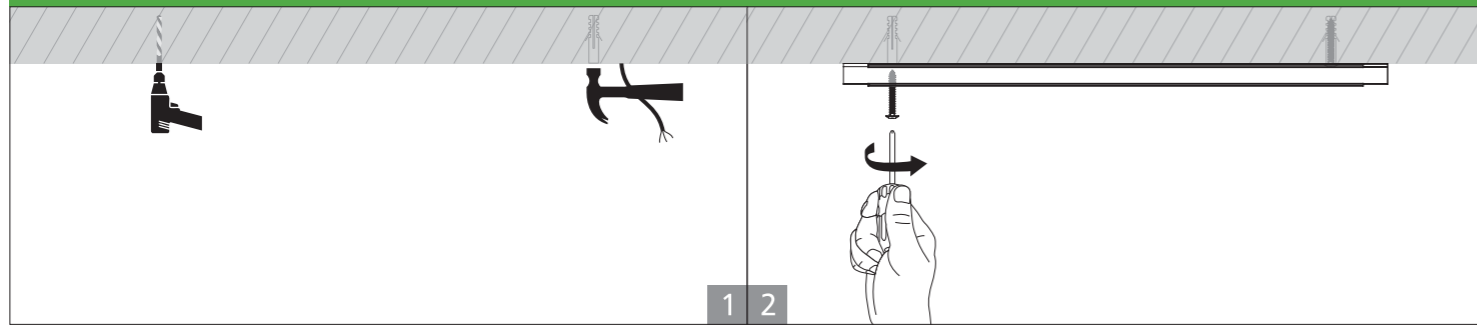
4-wires, 3-circuit



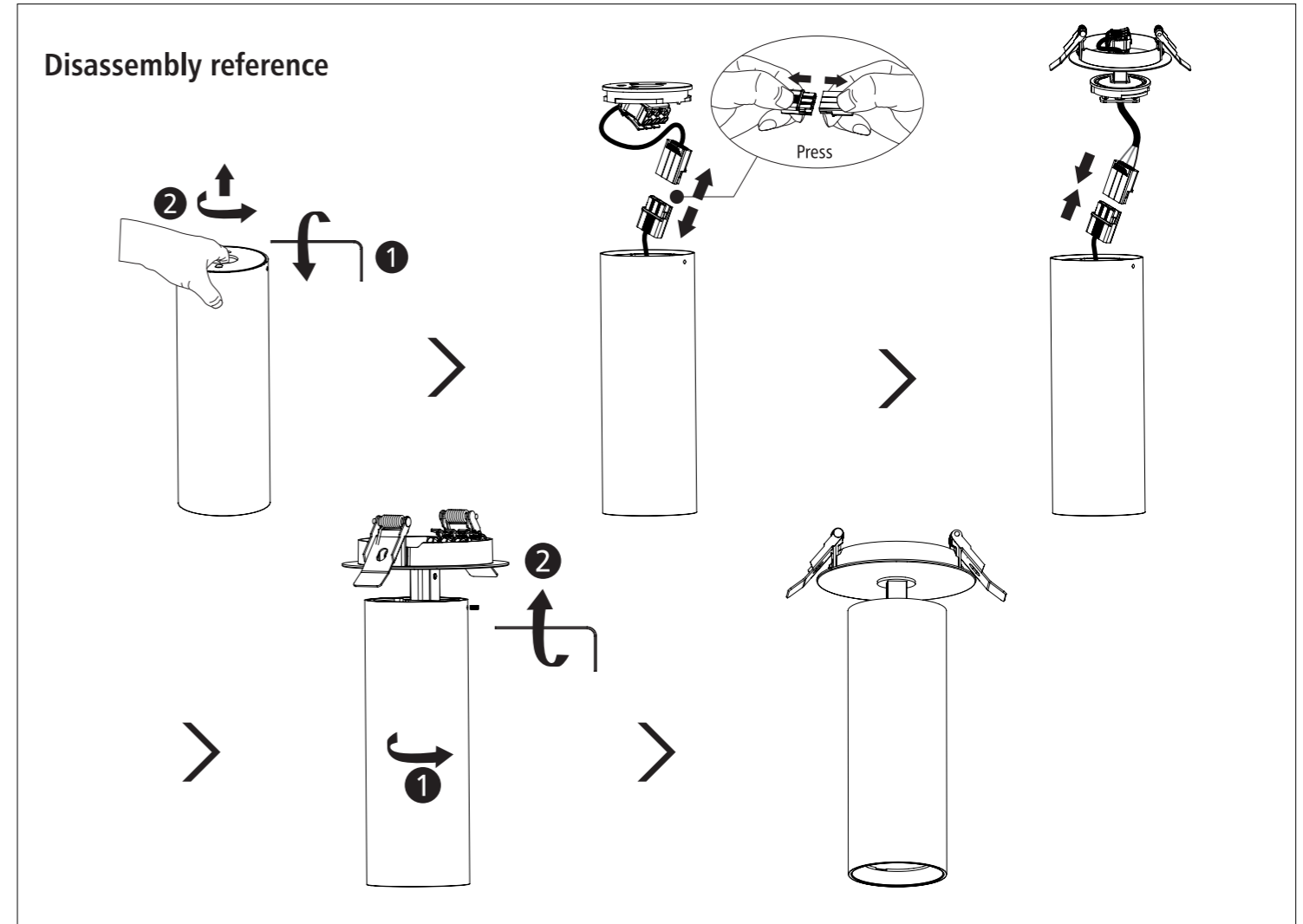
6-wires, 3-circuit (DALI)



Installation for track

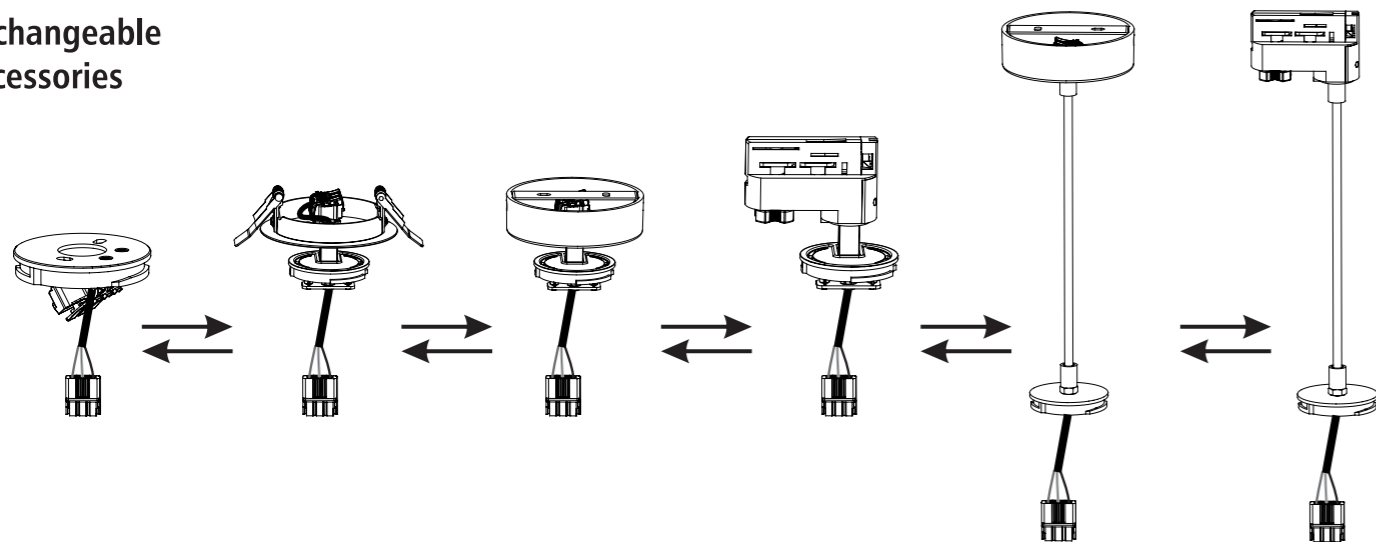


Disassembly reference



5. Lamp DIY instruction

Exchangeable accessories



How to change the reflector?

