



SD120 Surface Mounted LED Downlight

Introduction



SD120 downlight with traditional deep reflector (UGR<19) that provides perfect combination of high lighting efficiency, comfortable lighting and humanization design, without compromising on light performance(color rendering and color uniformity); It offers a wide choice of options for creating the desired ambience.

Features

1. High luminous efficiency.
2. 24°, 36°, 60°beam angle optional.
3. Easy installation and maintenance.
4. UGR<19 (not available for 25/35W 60°beam angle).

Application Areas

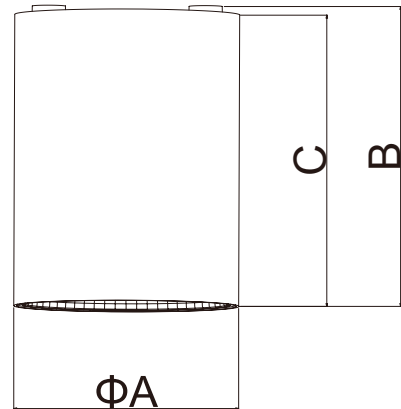
It is designed for general lighting applications in hotel, home, office, shop etc. It is also widely used for public areas such as stairway, lobby, reception, corridors etc.





Measurement

Model	Dimension(mm)			Size(mm)	Product Weight (Kg)	
	A	B	C		N.W/PC	G.W/PC
SD120-15W	100.4	133.8	130	Ø100*134	0.65	0.74
SD120-25W	120.4	143.8	140	Ø120*144	0.84	0.99
SD120-35W	170	159	155	Ø170*159	1.45	1.65



Technical Data Sheet

Model No.	SD120-15W		SD120-25W		SD120-35W	
Watt(W)	15W		25W		35W	
Dimension(mm)	Ø100.4*133.8		Ø120.4*143.8		Ø170*159	
Rated Input Voltage(V)	AC230V					
Input Voltage(V)	AC200-240V					
LED	COB					
SDCM	-					
CCT(K)	1-CCT: 2700K / 3000K / 4000K / 5000K					
"Luminous Flux (lm) ±5%	1-CCT	Non-DIM	1400~1750	2300~2800	3200~3900	
		DIM	1300~1670	2180~2660	3040~3710	
CRI	≥80 (≥90 Optional)					
Beam Angle (°)	24° / 36° / 60°					
UGR	< 19 (not available for 25/35W 60°beam angle)					
LED Driver	Built-in					
DIM	Triac					
CCT Selection Switch	No					
Protection Class	Class I					
IK Rating	IK03					
IP Rating	IP54					
Finishing color	White RAL 9016					
Material	Aluminum					
Lifetime (hr)	50,000					
Glow wire test (°C)	850°C					
Operating Temp.(°C)	-20°C ~45°C					
Storage Temp.(°C)	-20°C ~65°C					
Installation	Surface mount					
Brand Driver option	-					

Driver Datasheet (Non-Dimmable)

Power	15W	25W	35W
Rated Input Voltage(V)	AC230V		
Frequency	50/60Hz		
Input Voltage	AC200-240V		
Efficiency	84%	86%	86%
Total load wattage	15W±1W	25W±5%	35W±5%
Power Factor	0.9	0.9	0.9
Rated Input Current	≤0.09A	≤0.15A	≤0.2A
Full load output voltage	DC30-40V	DC30-40V	DC30-40V
Rated output current	350mA	600mA	860mA
Output current range	350mA±5%	600mA±5%	860mA±5%
Power tolerance	±5%		
Current output tolerance	±5%		
Short circuit protection	PASS		
Over voltage protection	PASS		
Over temperature protection	PASS		
THD	<20% @ 230V		
Surge	L-N 0.5KV / LN-PE 1KV	L-N 1KV / LN-PE 2KV	
Withstand voltage	AC3750V		

Driver Datasheet (Triac Dimmable)

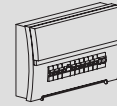
Power	15W	25W	35W
Rated Input Voltage(V)	AC230V		
Frequency	50Hz		
Input Voltage	AC200-240V		
Power Factor	0.9		
Efficiency	83%	83%	85%
Total load wattage	15W±1W	25W±5%	35W±5%
Rated Input Current	≤0.09A	≤0.14A	≤0.2A
Full load output voltage	DC30-40V	DC30-40V	DC30-40V
Rated output current	350mA	580mA	800mA
Output current range	350mA±5%	580mA±5%	800mA±5%
Power tolerance	±5%		
Current output tolerance	±5%		
Dimming Range	8%-100%		
Short circuit protection	PASS		
Over voltage protection	PASS		
Over temperature protection	PASS		
THD	<20%@230V		
Surge	L-N 0.5KV / LN-PE 1KV	L-N 1KV / LN-PE 2KV	
Withstand voltage	AC3750V		

Note: DALI & 0-10V driver specification, please refer to individual driver datasheet.

Installation Procedure

WARNING

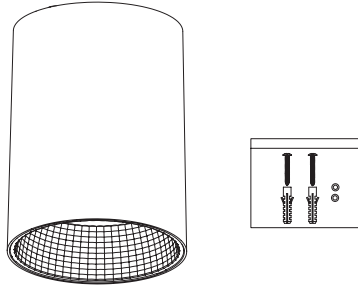
1. Switch off power supply before installation / maintenance.
2. Switch on after completing installation and examination of the circuit.
3. The downlight must be installed and maintained by professional electrician.



Turn off power supply before installation. Read instructions and make sure you have all the tools and accessories before installation.

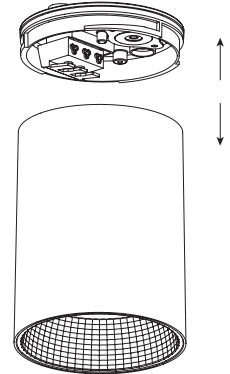
Installation

Step 1



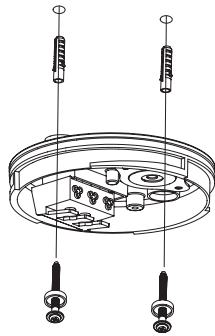
Take out fitting and accessories.

Step 2



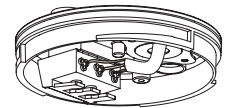
Separate bracket from fitting.




Step 3



Knock the plastic anchor into ceiling, fixing the bracket on the ceiling.

Step 4



-  L = BROWN
-  N = BLUE
-  ⊕ = YELLOW-GREEN

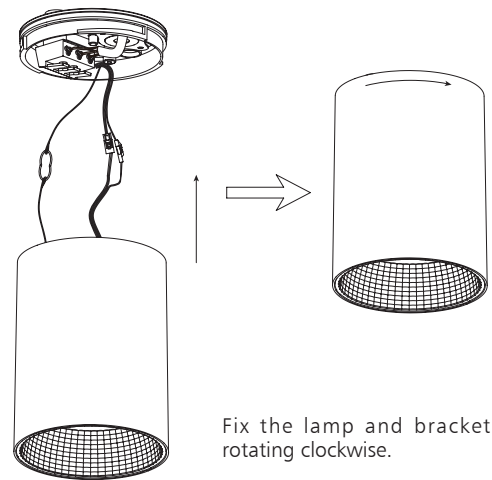
Connect the main wires to the terminal in the bracket.

Step 5



Connect the safety rope; plug the earth wire connector and the connect the male and female connector.

Step 6



Fix the lamp and bracket by rotating clockwise.

Step 7

